

United under a single banner of “Leading the world to optimal oral health”



Dr Orlando Monteiro da Silva

By Dr Orlando Monteiro da Silva, FDI President

cannot fail to be impressed at how close our organisation remains to its founding goals, principles and traditions. The same care as ever has been given to compiling an exceptional scientific programme that addresses the major topics and concerns of dental practitioners today, presented by some of the world's leading clinicians and experts in the field.

Always in the vanguard of trends and thinking, the FDI, at this year's event, is maintaining its focus on the future role of dental medicine, placing it firmly within the context of public health policy, strategies in fields of public concern such as noncommunicable diseases, and the imperative of linking oral health with general health.

to download the document in five languages from the FDI website. It is essential reading for all those interested in the future of dental medicine in the world, the challenges it faces and ideas on how to resolve them. For the FDI and its member associations worldwide, it provides a blueprint for achieving its goals and ambitions.

The congress itself is the key event in the organisation's annual calendar: most of the time and in at least one region, the FDI provides continuing education throughout the year. However, the congress brings a unique, international focus, with speakers from every area of the world, the Americas, Africa, South and West Asia, the Asia Pacific and Europe.

It is a place where ideas are communicated and shared among people from different horizons and where friendships are cemented. Way back in 1922, King Alfonso of Spain, addressing FDI delegates in Madrid, said, “By your meeting here you men of science are giving a lesson to diplomats. Because, as soon as something can be done for the good of humanity, for you nations no longer exist (...) A much higher conception unites you all.”

I believe that what he said rings true today. Here we are, men—and women—of science, united under a single banner of “Leading the world to optimal oral health”!

I would like to add my voice to that of my colleagues in the local organising committee in wishing you an enriching and enjoyable 2012 FDI Annual World Dental Congress in this great city of Hong Kong.

Significant achievements have been made

By Dr Sigmund Leung, President of the HKDA and chairperson of the local organising committee



Dr Sigmund Leung

As chairperson of the local organising committee, I would like to extend a warm welcome to you all to Hong Kong on the occasion of the 2012 FDI Annual World Dental Congress. My colleagues and I are especially honoured to be hosting the 100th edition of this prestigious event.

Hong Kong is a special administrative region of the People's Republic of China and a world-renowned centre of business and commerce. Being international and cosmopolitan, the city offers an infinite variety of things to see and do in a unique fusion of Eastern and Western heritage and culture.

Hong Kong has always kept up with advancing technologies in dental practice in order to meet the constantly evolving needs and demands of the community. As the representative body of the Hong Kong dental profession, the Hong Kong Dental Association has been taking a proactive role in promoting oral health in collaboration with FDI World Dental Federation and local government, as well as establishing an exchange network with our Mainland colleagues and neighbouring countries or places over the

years. With concerted effort and support, we are delighted to see that significant achievements have been made and we are honoured to be part of the growth of dental development.

The 2012 FDI AWDC provides all dental colleagues worldwide with a vibrant platform to update dental knowledge, explore new advances in dental technology and foster closer ties. Numerous eminent speakers have been invited to share their expertise with our congress participants. It will broaden our horizon in unlimited ways. Please join us and take full advantage of the opportunities this special Congress has to offer.

AD

The FDI has a long and proud history: founded in Paris in 1900, our federation lived, prospered and made its mark on oral health worldwide through the long and sometimes troubled years of the 20th century. One of the



Dr Erica Wheeler, Technical Officer at WHO's Department for Health Systems Policies and Workforce, addressing delegates of the World Oral Health Forum on Tuesday.

reasons behind its original establishment was to organise dental congresses with a focus on dental education, oral hygiene and public dental health and, in general, to resolve issues of complicated customs, regularise the profession and enable progress.

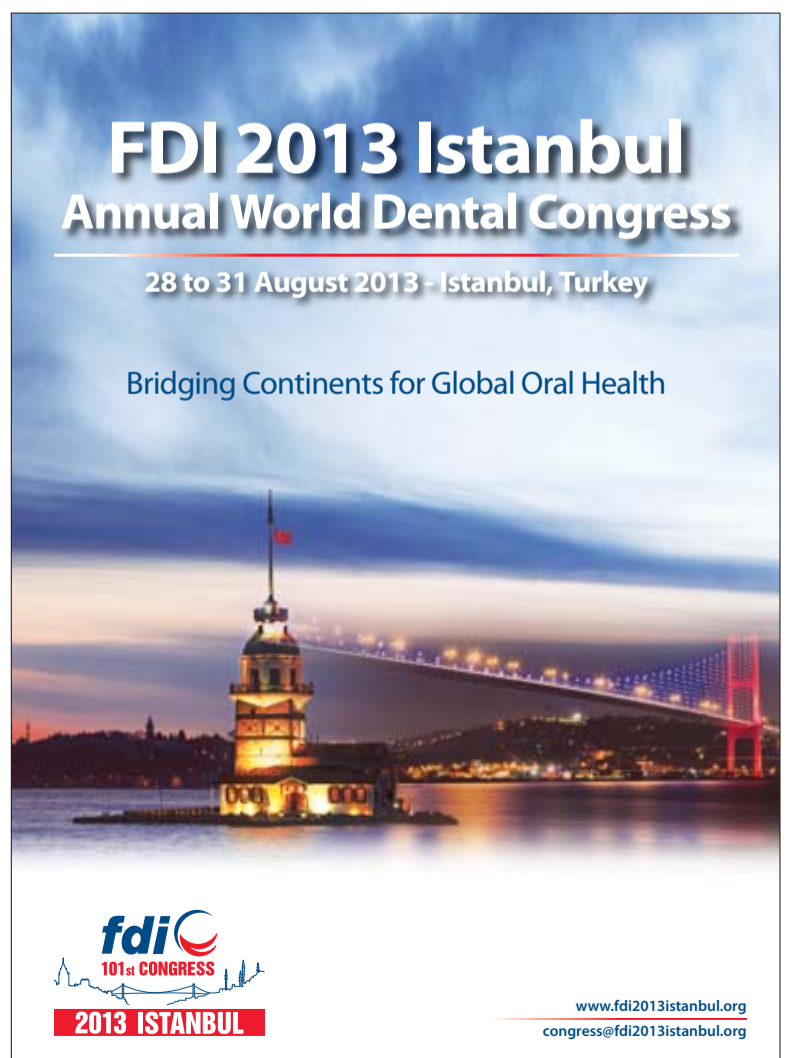
Anyone reading the programme for this special, celebratory 100th FDI Annual World Dental Congress

Just one day before the congress opened, on 28 August, the FDI's World Dental Parliament—some 300 delegates from over 130 national dental associations and specialist groups—convened for its annual plenary session and held a forum on the just-released FDI document titled “Vision 2020: Shaping the future of oral health”. Although congress goers were not party to the FDI parliament debate, they are able

FDI 2013 Istanbul Annual World Dental Congress

28 to 31 August 2013 - Istanbul, Turkey

Bridging Continents for Global Oral Health



www.fdi2013istanbul.org
congress@fdi2013istanbul.org

fdi worldental daily

About the Publisher

WDD is published by the FDI World Dental Federation in partnership with Dental Tribune International GmbH (DTI).

fdi FDI World Dental Federation
Tour de Cointrin, Avenue Louis Casai 84,
Case Postale 3, 1216 Cointrin – Genève
Switzerland
Phone: +41 22 560 81 50
Fax: +41 22 560 81 40
E-mail: media@fdiworldental.org
Website: www.fdiworldental.org



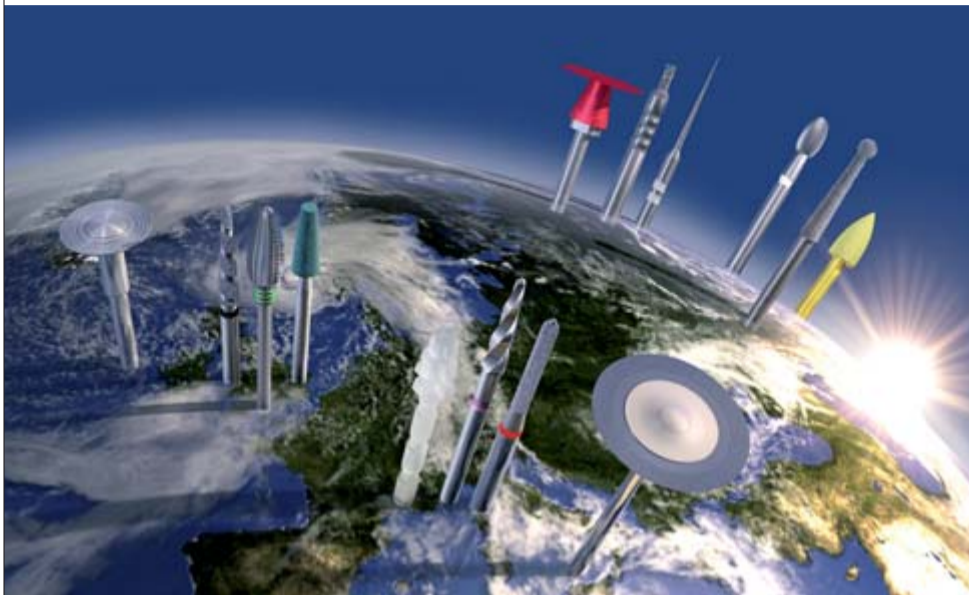
Dental Tribune International GmbH
Holbeinstraße 29
04229 Leipzig, Germany
Phone: +49 341 48474-302
Fax: +49 341 48474-173
E-mail: info@dental-tribune.com
Web: www.dental-tribune.com

FDI Communications Manager: Christopher M. Simpson
Managing Editor: Daniel Zimmermann
Editorial Assistance: Claudia Duschek
Product Manager: Bernhard Moldenhauer
Photographer: Wallace Chan
Designer: Franziska Dachsel
Executive Producer: Gernot Meyer

FDI Worldental Daily appears during the FDI Annual World Dental Congress in Hong Kong, 29 August–1 September 2012. The newspaper and all articles and illustrations therein are protected by copyright. Any utilisation without prior consent from the editor or publisher is inadmissible and liable to prosecution. The FDI or DTI will not be liable for any damages of any kind or loss of profits that might arise from information found in this publication, regardless of whether the FDI or DTI has been advised of the possibility of such damages. While all attempts have been made to ensure the accuracy of the provided information, neither FDI nor DTI can be held responsible for any errors or omissions.



The Total Rotary Solution



Z-Cut diamond instruments for shaping zirconia abutments



- The design of the Z-Cut instruments is tailored to the extreme hardness of zirconia ceramic.
- The instruments have a longer service life and much greater cutting capacity than standard instruments.
- The specially selected grit size facilitates shaping of zirconia abutments. Also ideal for sectioning zirconia crowns.



Booth #
H16/18

MF-Cut multifunctional cutting instruments



- For the areas of indication: Crown cutting, removing fillings and preparing abutments.
- MF-Cut instruments have a special cutting geometry with a sharp-edged angle, for extremely high cutting capacity on all types of alloy, amalgam and composites.
- The end-cutting design of the instruments facilitates quick penetration of the material to be prepared.



NTI-Kahla GmbH • Rotary Dental Instruments
Im Camisch 3, D-07768 Kahla/Germany

e-mail: nti@nti.de
www.nti.de

Global Caries Initiative is going public in Hong Kong

FDI launches new website in partnership with DTI

Today saw the official launch of the FDI's Global Caries Initiative (GCI) website, through which the federation will communicate the GCI's aims and achievements. Through a secure platform on the website, partners of the initiative can also debate and discuss specific ways to move the project forward.

The FDI said that it is proud of the GCI not only for the innovative and visionary role it assigns to dental medicine, but also for the opportunity it offers to better integrate dental medicine into public health policy, for example in the field of noncommunicable diseases. First launched in 2009, with support from founder sponsors Colgate, Unilever, Procter and Gamble, GlaxoSmithKline and Wrigley, the initiative was founded to integrate, in a practical way, the global health promotion dimension of the FDI's mission. Its ultimate aim is to facilitate a paradigm shift towards preventive caries management.

With that in mind, one of its first achievements was the development of a comprehensive framework for caries classification and management. The FDI Caries Matrix (2011) is a key step in integrating current science and establishing political consensus for such a framework. It is also intended to be an initial step towards integrating current science into dental practice, while recognising that it will need further development and refinement. Its development has now been completed and it provides the foundation for the GCI's future progress.

The GCI is also FDI's concrete response to a perceived need best expressed at the 120th session of the World Health Organization Executive Board by WHO Director-General Dr Margaret Chan: "Oral health is a neglected area of international health."



GCI chair Dr Patrick Hescot (center) posing with FDI President Dr Orlando Monteiro da Silva and DTI president Torsten Oemus.

Members of the dental profession agree that caries is not just about oral health; it is also about quality of life and, considering the number of school and work days lost due to oral pain, economic cost. Yet only a few international programmes and related funding mechanisms address the issue. The GCI intends to reverse this trend, generate greater awareness about the implications of neglected oral health and, with its focus on prevention, raise oral health to a higher level of international and national development policy.

According to the FDI, the GCI is not a move from a surgical and restorative model of care to a preventive one, that is replacement, since restoration, whether for health-related or aesthetic reasons, will always have a vital role in the work of the dental professional; the preventive model fulfils a more specific dimension of "leading the world to optimal oral health" by reaching a wider public worldwide in a shorter time frame. It rather seeks to encompass appropriate restorative care within a prevention-based model of oral health to expand value and contribute to health outcomes, the federation said.

Visitors can join a live demonstration of www.globalcariesinitiative.org during the FDI Annual World Dental Congress at Booth K29 in the exhibition hall.

Live.Learn.Laugh. partnership

Oral health promotion started in Vietnamese primary schools

A partnership between the Vietnamese Odonto-Stomatology Association (VOSA) and Unilever's P/S brand aims to improve oral health among 1,000 Vietnamese primary school children by providing oral care education and encouraging them to brush their teeth twice a day with a fluoride toothpaste. The oral care education is provided by primary school teachers, who received training and materials from the partners to help them in the classroom.

A behaviour-change programme has been initiated, integrating twice daily brushing into the normal school routine, with the partners installing toothbrushing booths in school so that pupils can brush their teeth after meals. An important aspect of the programme focuses on helping parents to get their children to brush their teeth in the mornings and evenings. The partners encourage parents to make twice daily brushing with fluoride toothpaste an activity in which the whole family participates.

Discussing the potential impact of the Live.Learn.Laugh. partnership project, Dr Trinh



Dinh Hai, VOSA President, said, "Implementing oral health care for young children will yield lifelong outcomes. When children grow up with a bright smile, they are more confident."

Remember to visit the Live.Learn.Laugh. partnership stand to find out more about the exciting oral health-improvement projects taking place around the world.

Challenges for military dentistry discussed

Prior to the FDI Annual World Dental Congress, the Section of Defence Forces Dental Services (SDFDS) held its World Military Congress from 26 to 29 August at the Hong Kong Convention and Exhibition Centre. Under the theme "Military dentistry in 2012", the meeting focused on the latest developments in oral health care carried out by military establishments in land and maritime environments.

On Tuesday, delegates also had the opportunity to attend a one-day visit to military facilities in Hong Kong. Around 100 delegates joined the two-day conference, during which speak-

Dental officers gathered in Hong Kong

ers from the People's Republic of China and other countries discussed various topics related to oral health in the military context and the challenges that military dentistry faces. Among others, they reported on disaster relief and management, forensic dentistry, oral pathology, endodontics, management of dental service deliv-

ery, oral and maxillofacial treatment and computer-assisted design.

"Military forces throughout the world are becoming more technologically advanced and military dental services are now better placed to manage oral health in the military environment," Col. Andrew Gray, New

Zealand Director of Defence Dental Services, told *Worldental Daily*.

Founded in 1904, the SDFDS today consists of representatives from the USA, China, Australia, New Zealand and South Africa. Its task is to provide a world forum for the exchange of ideas, innovations and concepts within the area of dental services in the defence forces.



(DTI/Photo Wallace Chan, Hong Kong)

PRC officials visit AWDC

Health minister to receive award today



Zhu Chen



Dr Lingzhi Kong

The FDI Annual World Dental Congress will see visits by high-ranking health officials from the People's Republic of China during the next two days. This afternoon, Minister of Health Zhu Chen will receive the FDI's first Inaugural World Oral Health Recognition Award during this year's welcome ceremony. Fifty-nine-year-old Chen, who is also a professor at Jiao Tong University's School of Medicine in Shanghai, among other things, was selected for his contributions to the development of dentistry in China.

Worldental Daily has also learnt that the Deputy Director-General of the ministry's Center for Disease Control and Prevention, Dr Lingzhi Kong, will be giving a presentation on the oral health situation in China during a special session open to the public tomorrow from 11:30 in room S421. Simultaneous interpreting into English will be provided. Read more about this in the 31 August edition of *Worldental Daily*.

Stand Out from the Rest with High-Quality Care and Safety



Handheld X-ray Systems



You are a professional who wants only the best for your patients and staff. That is why you insist on the NOMAD® Handheld X-ray system. No other X-ray system offers the quality, safety and value of NOMAD. More than 30 independent evaluations and third-party studies have concluded that NOMAD Handheld X-ray systems are both safe and effective.

Why settle for less?

Come see the Aribex NOMAD at booth #E13 (TWL Dental / EagerTech)

www.aribex.com

NCDs—A major obstacle to socio-economic development



Dr Martin Gillis

In September 2011, a UN High-level Meeting on Noncommunicable Diseases (NCDs) was held in New York City. This was a watershed moment in the global fight against NCDs with the adoption of the Political Declaration on NCDs by UN member states, meaning that all nations must take action against this global epidemic. The four principal NCDs, cardiovascular disease, cancer, diabetes and respiratory diseases, accounted for 60% of all deaths globally and 80% of deaths in low- and middle-income countries in 2005. The WHO projects that deaths attributed to NCDs will rise globally by 17% by 2015.

There are four primary risk factors that fuel the rising incidence of NCDs: tobacco use, alcohol abuse, poor nutrition and physical inactivity. Disease prevention and control focused on minimising public exposure to such risk is vital to reversing the rising tide of NCDs. If this is not done, NCDs will continue to be a major obstacle to socio-economic development and a barrier to the achievement of the Millennium De-

By Dr Martin Gillis, Canada

velopment Goals and the Post-2015 UN development agenda.

Oral disease, the most common NCD and one of the most expensive

and subsidiaries such as the Food and Agriculture Organization of the United Nations and the Codex Alimentarius Commission, and partnerships with external agencies, includ-

lifestyle choices in today's society. Improving nutrition will require governments to mandate legislation and regulation reflective of health in all policies; a philosophical shift in

“Oral disease, the most common NCD and one of the most expensive to treat, is a global public health concern.”

to treat, is a global public health concern. The political declaration notes that oral diseases “share common risk factors and can benefit from common responses”. Therefore, interventions and strategies to improve nutrition should have a positive impact on all NCDs, including the prevention and control of oral disease. The UN knows how to deal with NCDs; it is a matter of taking action by operationalising existing plans such as the WHO Global Strategy on Diet, Physical Activity and Health, and utilising processes and structures such as the WHO Innovative Care for Chronic Conditions Framework.

The WHO will be the lead agency implementing prevention and control measures for NCDs; however, progress will require a multifaceted approach from multiple sectors. In terms of nutrition, concerted action with other UN agencies

ing global NGOs such as the FDI World Dental Federation and the International Diabetes Federation (IDF), is needed. Diets comprised of processed foods with high fat, salt, and sugar content are common

the agrifood industry to provide affordable, healthy food; health-care providers to educate and facilitate behaviour change in the public they serve; and all of society to engage in healthy lifestyle practices.

Partnerships are crucial to the success of future endeavours against NCDs. Many NGOs and civil society organisations have already come together under the NCD Alliance and the World Health Professions Alliance to share expertise and coordinate efforts to facilitate change. The FDI and IDF recognise the importance of partnership as witnessed by the release of “A call to action for integrated case management of the diabetic patient” during the 2007 Annual World Dental Congress in Dubai. This led IDF to create oral health resources for diabetes care providers and raised awareness about the importance of oral health in diabetes management.

Today we have the task of implementing the Political Declaration on NCDs by addressing complex issues such as poor nutrition. Mitigating this risk factor will help with the prevention and control of oral disease and type 2 diabetes. Now is the time for both federations to renew efforts for collaborative action on this global concern.

Dr Martin Gillis is an assistant professor at the Dalhousie University's Faculty of Dentistry in Halifax, Canada, and a member of IDF's Consultative Section on Diabetes Education. He also serves as the oral health representative for IDF. Today, he will be presenting a paper entitled “Poor nutrition: A risk factor driving the NCD epidemic” as part of the scientific programme at this year's congress in room S221 of the HKCEC.



Mesenchymal stem cells: From clinics to bench top and back



Dr Songtao Shi

Mesenchymal stem cells (MSCs) are a population of hierarchical postnatal stem cells with the potential to differentiate into mesodermal lineage-derived cells, including osteoblasts, chondrocytes, adipocytes, cardiomyocytes, myoblasts and non-mesodermal lineage-derived cells, such as neural cells. They are a promising source for regenerative medicine in terms of forming mineralised tissue to replace damaged and diseased tissue.

The orofacial region contains multiple lineage, including bone marrow-

By Dr Songtao Shi, USA

derived MSCs (BMMSCs), dental-pulp stem cells, periodontal ligament stem cells (PDLSCs), stem cells from human exfoliated deciduous teeth, stem cells from root apical papilla, and gingival stem/progenitor cells. Our team of researchers at the University of Southern California has

peutic approach to treating jaw necrosis using new BMMSC-generated bone and bone marrow.

Although stem cell-based regenerative medicine is a promising approach for functional tissue reconstruction, the role of immune response

Conversely, reduction of IFN- γ and TNF- α levels at the implantation sites by systemic infusion of Foxp3+ regulatory T cells markedly improved BMMSC-based bone regeneration and calvarial defect repair in C57BL/6 mice. For potential pharmacological intervention, we demonstrated that

“...the role of immune response in cell-based tissue regeneration remains unclear.”

identified that PDLSCs can be used successfully to treat periodontitis with regeneration of cementum and Sharpey's fibres in swine and humans.

More interestingly, we used orofacial MSCs to regenerate root/periodontal complexes that are capable of supporting artificial porcelain crowns, resulting in restoration of normal tooth function in swine. We were also able to generate jaw osteonecrosis in mice and employed BMMSC implantation to treat the necrosis, suggesting a novel thera-

peutic approach to treating jaw necrosis using new BMMSC-generated bone and bone marrow. Although stem cell-based regenerative medicine is a promising approach for functional tissue reconstruction, the role of immune response in cell-based tissue regeneration remains unclear. We demonstrated that pro-inflammatory T cells in the recipients inhibited BMMSC-mediated bone formation via T helper 1 cytokine interferon (IFN)- γ -induced down-regulation of runt-related transcription factor 2 pathway and tumour necrosis factor (TNF)- α -regulated BMMSC apoptosis. We found that TNF- α converted IFN- γ -activated non-apoptotic Fas to a caspase 3/8-associated apoptotic signalling in BMMSCs through inhibition of nuclear factor kappa B, resulting in BMMSC apoptosis.

local administration of aspirin reduced levels of IFN- γ and TNF- α at the implantation site and significantly improved BMMSC-based calvarial defect repair.

These results collectively uncover a previously unrecognised role of recipient T cells in BMMSC-based tissue engineering and suggest a practical approach to enhancing bone regeneration by pharmacological control of local cytokines.

MSC-based immunotherapy has demonstrated successful outcomes in

several human diseases and preclinical disease models, including acute graft-versus-host disease, systemic lupus erythematosus and SS, etc. The promising results of such therapeutic effects have led to exploration of the underlying mechanisms. It has been shown that MSCs, including orofacial tissue-derived MSCs, target lymphocytes through several soluble factors, such as nitric oxide, indoleamine 2,3-dioxygenase, and the Fas/FasL pathway. The immunomodulatory properties of MSCs also play an important role in treating immune-related oral diseases, such as bisphosphonate-related osteonecrosis of the jaw characterised by suppression of regulatory T cells and activation of T helper 17 cells.

Our and others' studies indicate the great potential for using MSCs to treat a variety of disorders and to regenerate functional mineralised tissue.

Dr Songtao Shi is an associate professor at the University of Southern California's Center for Craniofacial Molecular Biology in Los Angeles in the US. This afternoon, he will be presenting a paper on MSCs as part of the scientific programme at this year's congress in Hall F of the HKCEC.

101 Years of Innovation . . .

In our first 100 years, Novocol became a global leader in the production of dental anesthesia. Today, Novocol creates the world's most innovative dental products and offers the next generation of infection and pain control.

Visit www.novocol.com or contact Michael Cohen at mcohen@novocol.com to see what splashes we plan to make . . . in the next hundred.



Anesthetics

Needle Systems

Syringes

Infection Control

Restorative Materials



101 YEARS OF DENTAL INNOVATION
1911 - 2012

Come visit us at FDI Hong Kong Booth E02/04



Prof. Stefan Haßfeld

Traditional imaging will not disappear with CBCT

An interview with congress presenter Prof. Stefan Haßfeld, Germany

The ability to examine the craniofacial anatomy with help of three-dimensional images obtained through Cone Beam Computerized Tomography (CBCT) has been praised as the new gold standard in oral surgery. *Worldental Daily* had the opportunity to speak

with Prof. Stefan Haßfeld from the University of Dortmund's Department of Oral and Cranio-Maxillo-facial Surgery in Germany, who will be presenting an afternoon session on CBCT in Hall F this Wednesday about the technology and its future potential.

Worldental Daily: Prof. Haßfeld, in your opinion, has CBCT become a standard in dentistry?

Prof. Stefan Haßfeld: CBCT has been available in dentistry for over a decade and since then has been established as a standard for many indications. Despite this develop-

ment, I doubt that the technology will make traditional imaging obsolete any time soon. Instead, it will be used as an aid in more complex treatments.

One of the areas in which CBCT is used is implant treatment planning. What are the other main areas of application?

Nowadays, the technology is widely used in complex oral and maxillofacial surgery procedures. For example, we regularly examine large cysts and deeply impacted third molars with CBCT. Its use can also be of benefit for the diagnosis of maxillary sinus diseases, as well as in traumatology or the correction of anomalies and dysgnathias.

What potential does the technology offer regarding the improvement of treatment outcomes?

In contrast to traditional imaging, CBCT allows the human anatomy and pathology to be assessed in detail in 3-D space. This can be extremely helpful for treatment planning and the assessment of regions that present a surgical risk, like adjacent nerves, teeth or blood vessels.

In many cases, we expect a significant reduction in operative risks and an improvement in surgical planning.

According to the industry, the radiation dose for patients is significantly lower with CBCT. Do you agree with this statement?

I would have to disagree, since compared with traditional imaging, CBCT usually has a higher radiation dose. However, it also yields completely different information. By taking a high number of single images from different angles, CBCT can provide lower radiation doses only in a few exceptional cases.

Is this the only drawback compared with traditional imaging techniques?

As CBCT has another field of indications, comparison with traditional imaging techniques is not appropriate. However, there are indeed some shortcomings, like higher radiation doses and costs, as well as a lower resolution compared with dental film.

What role will CBCT play in dental practices in the future?

CBCT will take root in dental practices, particularly in those with emphasis on surgery, when it comes to certain complex treatment issues.

For all the mentioned reasons, traditional imaging methods will not disappear. A panoramic X-ray image, for example, provides an excellent overview of the entire jaw arch for clinically oriented examinations, with only little effort and at a small radiation dose.

Dental film still offers the highest resolution for viewing details. Rather, the establishment of CBCT for dental imaging offers us additional options for daily practice.

Thank you very much for this interview.

AD

PEOPLE HAVE PRIORITY



See four times more

The Synea range with LED+



Optimal illumination

+

Small head

+

High colour rendering index

+

Perfect LED positioning

One light – four advantages, the perfect combination. Optimal illumination; a colour rendering index of more than 90; a perfectly positioned LED; and a small head: Four reasons why you should use **Synea turbines** with LED+.



Ready for imitation.

BOOTH N° 588

SHIFT INTO

HIGH-TECH MODE



SOPROLIFE

Light Induced Fluorescence Evaluator

THE BLUE REVOLUTION

With SOPROLIFE®, diagnose occlusal or interproximal caries... differentiate with outstanding accuracy healthy tissue from infected tissue, so as to excavate only the decayed area.

www.soprolife.com

pspix

ONE YOU SHOOT TWO YOU SCAN

Designed to make intra-oral imaging in the dental office easier and more efficient

- Imaging Plates are reusable
- Readout time: 4,3 to 7,5 seconds
- A constant image quality
- 100 % automated
- Smart design, ergonomic and compact



Composan LCM and Composan LCM flow

Promedica has one of its first class composites on display that is supposed to meet highest aesthetic requirements through its perfect adaptation to the natural tooth colour and tooth like brilliance of the final filling. The light-curing micro hybrid composite Composan LCM combines a high filler content with a well-balanced resin matrix for excellent properties such as



minimal abrasion, low polymerisation shrinkage as well as high compressive and transverse strength. According to the German company, it also convinces by its easy handling as well as optimal polishing properties. In combination with Compobond 1, the adhesion of Composan LCM to dentine and enamel is extraordinarily strong thus sealing off the cavity margin, it said.

Composan LCM can be used in both anterior and posterior areas, as well as for inlay and onlay techniques. It is available as a flowable version Composan LCM flow that is indicated for minimal invasive preparation, fillings of class III to V, extended fissure sealing etc.

Composan LCM flow is an ideal lining material under composites and easy to apply directly from the syringe,

according to the company. It is said to adapt perfectly to the cavity walls and reinforce the bonding layer and blocks out all kind of irregularities of the cavity floor. Owing to its elastic properties Composan LCM flow is also highly stress absorbing.

PROMEDICA, GERMANY
www.promedica.de
Booth K25

AD



Superior Design, Unmatched Precision



Hanau
Wide-Vue

Enhanced view when positioning tooth-to-tooth contacts on models



Denar
Mark 330
Slidematic Facebow



Whip Mix
2240



Exchange mounted casts between articulators without loss of accuracy.



Scan code to visit us at whipmix.com



Like us on Facebook

Stop by our booth!
E06

Whip Mix Corporation • 361 Farmington Ave. • Louisville, KY 40209 USA: whipmix.com

New compressor generation by Dürr

At the FDI Annual World Dental Congress, the German dental company Dürr is presenting the new generation of its successful compressor series to dental professionals in Asia. First introduced at IDS Cologne in 2011, both the Tornado 1 and 2 are said to be robust, ultrasilent and economical while offering the same advantages as the first generation including a compact design and compressed air of the highest quality.



According to Dürr, the new model uses 15 per cent less energy than its predecessor. It's improved design, recently awarded a winner of the red dot design award 2011, and lower noise level makes it more adaptable to dental offices.

The devices can be used for up to three operatories. An anti-bacterial coating based on nanotechnology on the inside of the tank is supposed to ensure the highest level of hygiene. Both versions also benefit from an optional membrane-drying unit that provides constant dry air and practically zero regeneration time which make the compressors especially suited for heavy-duty conditions. Since the compression performance is more effectively exploited through the membrane-drying unit, the equipment can be operated 24 hours a day, the company said.

The output voltage of the Tornado compressors can be adapted to different power supplies.

DÜRR DENTAL, GERMANY
www.duerrdental.de/en
Booth H20/J19

AIR-N-GO Polishers and powders

With AIR-N-GO, the French Acteon Group aims to increase the possibilities of dental clinicians for care and treatment with one single handpiece. The dual purpose air polisher with direct connection to the chair was designed for ultra-active supra-gingival polishing as well as sub-gingival periodontal diseases and peri-implantitis treatment. According to the manufac-

turer, it instantly converts into a perio system through an optional AIR-N-GO PERIO Kit comprising an ultra-fine PERIO nozzle, green PERIO powder tank and glycine-based PERIO powder.

Available as seven different powders, the AIR-N-GO powder product range is said to provide gentle care, effective prophylaxis and subgingi-

val treatments. The unique grain structure of each powder allows for efficient as well as painless polishing and cleaning with no damage to teeth or implants, the company said.

The AIR-N-GO 'CLASSIC', active and sodium bicarbonate based powder, with less aggressive geometry, comes in five 100 per cent natural flavours. Based on natural calcium



carbonate, the AIR-N-GO 'PEARL' ultra-active powder consists of micro-spheres that are gentle to sensitive tissues. The two ranges are recommended for supra-gingival prophylaxis.

ACTEON GROUP, FRANCE
www.acteongroup.com
www.airngoconcept.com
Booth L16/M17

Proface

W&H's new Proface light probe is supposed to enable direct visual detection of caries in opened cavities and minimise the risk of caries recurrence.

According to the Austrian company, it enables selective treatment during caries excavation based on Fluorescence Aided Caries Excavation (FACE).

This method works in the way that violet light is applied to the opened cavity where porphyrins, metabolic by-products left by the bacteria in infected dentine and not visible to the human eye, fluoresce red while healthy tooth substance fluoresce green.

Diagnostic goggles with special filters also enhance this effect, the company said.

With Proface, dentists will also have more information in regard to treatment decisions in Caries Profunda.

Access to the treatment site is optimised by the probe's new slender design which was devel-



oped to guarantee flexible and painless application. W&H said that with Proface success of caries excavation can be assessed at a glance and at any stage of the process.

By assisting dentists with selective, minimally invasive excavating, it substantially contributes to maintaining the patient's healthy tooth substance, they added.

W&H, AUSTRIA
www.wh.com
Booth G22/26

AD

straumann

SIMPLY BETTER STRAUMANN® SLActive

The next generation in surface technology designed to deliver:

- Higher security and faster osseointegration for every indication^{1,2}
- Reduced healing times from 6-8 weeks down to 3-4 weeks³
- Increased treatment predictability in critical protocols¹

More information on www.straumann.com

**FDI AWDC
2012**
VISIT US AT BOOTH
M02/N05



¹ Ganeles et al. Clin. Oral Impl. Res. 2008;19:1119-1128
² Bornstein et al. J Periodontol. 2010 Jun;81(6):809-819
³ Oates et al. The International Journal of Oral & Maxillofacial Implants. 2007;22(5):755-760
For more details see summary SLActive® Scientific Studies.

COMMITTED TO
SIMPLY DOING MORE
FOR DENTAL PROFESSIONALS

Denar Mark 300

Whip Mix has announced the market launch of its Denar Mark 300 articulators for use in orthodontic therapy. The new series consists of three models (Mark 310, Mark 320, and Mark 330) and is supposed to bring a new standard of interchangeability with factory set accuracy within 20 microns. According to Whip Mix, the Mark 300 articulators have a sleek design and con-



temporary look that is aesthetically pleasing and durable at the same time. While all models of the series feature fixed settings, the Mark 330 is semi-adjustable and the Mark 320 is semi-adjustable with fixed progressive.

Besides new articulators, Whip Mix has also its Esthetic CrossRef centered bite record as well as its

UltiRock Premium Die Stone on display. Based in Louisville, KY. In the USA and Dortmund in Germany, the company has been manufacturing and distributing products for dental practices and laboratories since 1919.

WHIP MIX, USA
www.whipmix.com
Booth Eo6

Straumann Bone Level Implants

The Straumann Dental Implant System includes the new generation Bone Level Implant which is now available all over Asia, including China, Taiwan and Japan. According to the company, these new implants, developed in close collaboration with internationally renowned experts and confirmed through clinical studies, combine new and innovative concepts with well-documented design elements to provide dental professionals with aesthetic flexibility.



Bone Level Implants feature Straumann's novel Bone Control Design, a concept which follows the five fundamental biological principles to optimise bone preservation and stabilising soft tissue. While the SLActive implant surface offers unparalleled implant surface osteoconductivity, the conical implant-abutment connection provides a strong and tight joint in all cases of loading. In addition, the biomechanical design of the implant and thread optimises the transmission of the chewing forces to the bone, provide high primary stability and make the basis for crestal bone preservation, Straumann said.



The biological distance is respected by the horizontal distance between the microgap and the bone. Moreover, the transition of the rough to the smooth surface is optimally positioned at the level of the crestal bone to provide the maximum surface for osseointegration and soft tissue growth.

The Straumann Bone Level Implant is available in three endosteal diameters and four lengths and comes with a comprehensive prosthetic portfolio. According to the company, they can be placed with the same surgical kit and procedure as the other implants in the company's current range, thus providing even greater flexibility, broader treatment options and higher reliability.

INSTITUTE STRAUMANN, SWITZERLAND
www.straumann.com
Booth Mo2/No5

AD



www.dentech.com.cn

The 16th China Int'l Exhibition & Symposium on Dental Equipment, Technology & Products

The 6th Asian Dental Lab Outsourcing Exhibition

October 24~27, 2012
Shanghai World Expo Exhibition and Convention Center (The Expo Theme Pavilion), Shanghai, China

Approved by: Ministry of Science and Technology of the People's Republic of China
Sponsored by: China Association for Science and Technology / Chinese Stomatological Association / Shanghai Stomatological Association
Organized by: China International Conference Center for Science & Technology / Ninth People's Hospital, School of Medicine, Shanghai Jiao Tong University
Co-organized by: College of Stomatology, Shanghai Jiao Tong University / School of Stomatology, Tong Ji University / Shanghai Stomatological Disease Center / Shanghai ShowStar Exhibition Service Co., Ltd.

If you are interested in participating or visiting the Exhibition, please fill the form below and fax or post to: Shanghai ShowStar Exhibition Service Co., Ltd. Room 22C/D, Jiali Mansion, No. 1228, Yan'an Road (W), Shanghai 200052, China
Tel: 86-21-6294 6966 / 6294 6967 / 6294 6968. Fax: 86-21-6280 0908. E-mail: mail@showstar.net

I am interested in DenTech China 2012, please send me more information on EXHIBITING VISITING

Name _____ Company _____

Address _____

Telephone _____ Fax _____

Zip _____ E-mail _____

INTRODUCING

Two Striper[®]

THE P.B.S.[®] BOND ADVANTAGE

LONGEST LASTING BUR

- Permanently bonded diamond crystals result in no diamond pull out

FAST, SMOOTH CUTTING

- More diamonds freely exposed at every point for greater exposure

RAPID REMOVAL

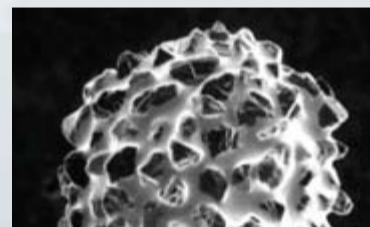
- Uniform distribution & high concentration of diamond crystals

INDUSTRY INNOVATOR

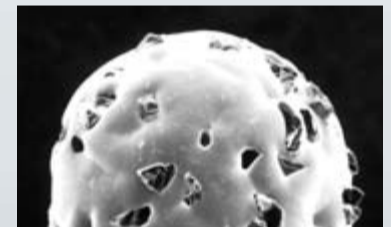
- Only diamond bur on market manufactured using the P.B.S.[®] bonding process



New Diamond Bur Tip

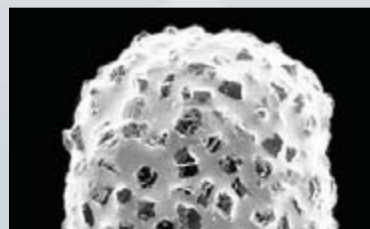


New Two Striper[®] bur tip

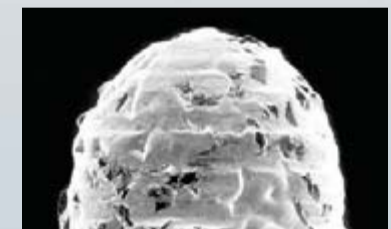


New electroplated bur tip

Used Diamond Bur Tip



Used Two Striper[®] bur tip



Used electroplated bur tip



**abrasive
technology**



800.964.8324 | www.abrasive-tech.com

POSICAINE

With Posicaine, the Canadian company, Novocol, presents a local dental anaesthesia that can be used in both routine (Posicaine 200, Articaine with Epinephrine 1:200,000) and complex procedures (Posicaine 100, Articaine with Epinephrine 1:100,000) when improved visualization of the surgical field is needed. According to Novocol, its formula offers predictable anaesthesia of



60 minutes for infiltration injections and 120 minutes for nerve blocks.

Posicaine does not contain methylparaben or latex in order to avoid aller-

gic responses from patients that are sensitive to these compounds. Dental clinicians benefit from the neutral Mylar label color-coded glass cartridges by minimizing the risk of wounds in case of cartridge breakage during use.

Additionally, the glass cartridges are siliconised to allow for smoother injections. Novocol manufactures its product in Canada according to the

highest quality and safety standards. Lot and Expiration dates are imprinted on the case label, as well as the box and cartridge label. Both formulas are available in terminally sterilized boxes of 50 cartridges each.

NOVOCOL, CANADA
www.novocol.com
Booth E02/04

NTI product news

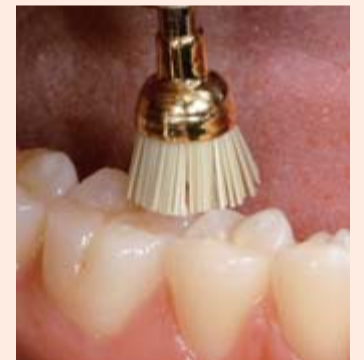
On display in Hong Kong is the company's ProfiLax3 polishes and brushes system, available in three hardnesses. While the soft pink coloured brushes are supposed to simplify prophylaxis



NTI ProfiLax3

for sensitive patients and clean compromised teeth and gingiva gently, the stiffer yellow brushes are ideal for fast and accurate removal of temporary cements before finally fixing the crowns and bridges.

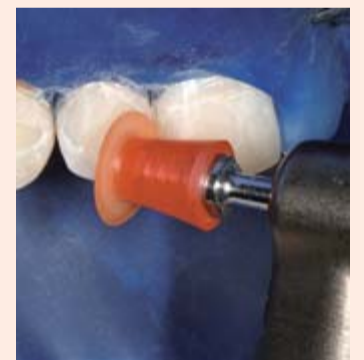
The fibres of NTI's composite polishing brushes are impregnated with silicon carbide polishing particles for creating a perfect lustre finish on occlusal surfaces.



NTI polishing brushes

They come in three shapes for covering all clinical situations, the company said.

FlexiPol are highly flexible polishing discs developed for the purpose of producing a natural lustre on all nanohybrid and standard composites. Its 1 mm thick core is made of silicone in order to prevent the mandrel coming into contact with the polished



NTI FlexiPol

surface. This avoids damage or discolouration of teeth, composite or gingiva. According to the company, the discs are available in four grit sizes.

NTI-KAHLA, GERMANY
www.nti.de
Booth H16/18

AD

In a LEAGUE of its own ...

Inject Beauty & Strength as you directly stack and shape Beautifil Injectable into life-like aesthetic restorations that exhibit superior endurance to occlusal load, sustained fluoride protection and unique anti-plaque effect.

SHOFU INC. SINGAPORE BRANCH
Tel (65) 6377 2722 Fax (65) 6377 1121
mailbx@shofu.com.sg website www.shofu.com.sg

Official Partner **SHOFU** **miCD**
Minimally Invasive Cosmetic Dentistry

NOMAD Handheld X-ray

When US manufacturer Aribex introduced the first handheld dental X-ray system in 2005, the aim was to create an inherently safe X-ray device that could be held during radiograph exposure. Two models exist that are available to clinicians around the world (varies by jurisdiction).

NOMAD Dental weighs 4 kg and features a pistol-grip design, with rechargeable NiCd battery. It generates sharp, clear images with digital sensors, conventional film, or phosphor plate systems.



The next generation NOMAD Pro, available since 2008, weighs only 2.5 kg and has a rechargeable Li-poly battery in the handle. It also features a full-colour LCD user interface, preset exposure settings, and additional time-saving features in a sleek design. Each model is capable of taking hundreds of diagnostic-quality radiographs with a single charge.

According to Aribex, the NOMAD allows the operator to remain chairside with the patient during radiography. With the handheld X-ray system, not only can the operator stay in the room, they can also reassure anxious patients (including children). This makes the device a first choice for the treatment of special needs or sedated patients. It also shortens procedure time and reduces mistakes and retakes, the company said.

More than 30 independent evaluations and scientific studies have concluded the Aribex systems are both effective and safe — made possible by patented shielding on the X-ray source and the leaded acrylic backscatter shield on the collimator cone, which protects the operator from reflected radiation.

“The NOMAD has forever changed the way that dental radiography is performed,” said Dr Clark Turner, Aribex founder and CEO. “With over 10,000 units now currently in use, it has become a staple in dental operatories everywhere.”

ARIBEX, USA
www.aribex.com

TWL DENTAL
Booth E13

Premier Implant Cement

Premier Dental's newest non-eugenol resin cement was designed for implant-retained crowns. According to the US company, it is also suitable for temporary cementation of provisional restorations where long-term or increased retention is desired.

Made from a tough elastomeric resin, the material is said to provide

secure retention and an excellent marginal seal. Because the retention is mechanical, the crown can be removed for adjustments or periodontal treatment without destroying the restoration, Premier said.

Premier has announced to have a number of other innovative products on display in Hong Kong. In



addition to dental materials, the company offers practice hygiene products, instruments for different dental procedures, as well as cosmetic solutions like teeth whitening kits.

PREMIER DENTAL
PRODUCTS COMPANY, USA
www.premusa.com
Booth C10

AD

The Low Radiation Sensor*
With the Best Images

suni ray

New Impact Protection Technology
Low Radiation +- 40ms
Faster Acquisition**
Crystal Clear Images
Compact & Portable USB System
Superb AIM Filter
Safety Cable Release
CMOS FOP

*CR Foundation, September 2011
**depending on PC

Visit us at the
FDI in Hong Kong
Booth # F11

Now available for
Mac and Windows

+ 1 408 227 6698 www.suni.com international@suni.com

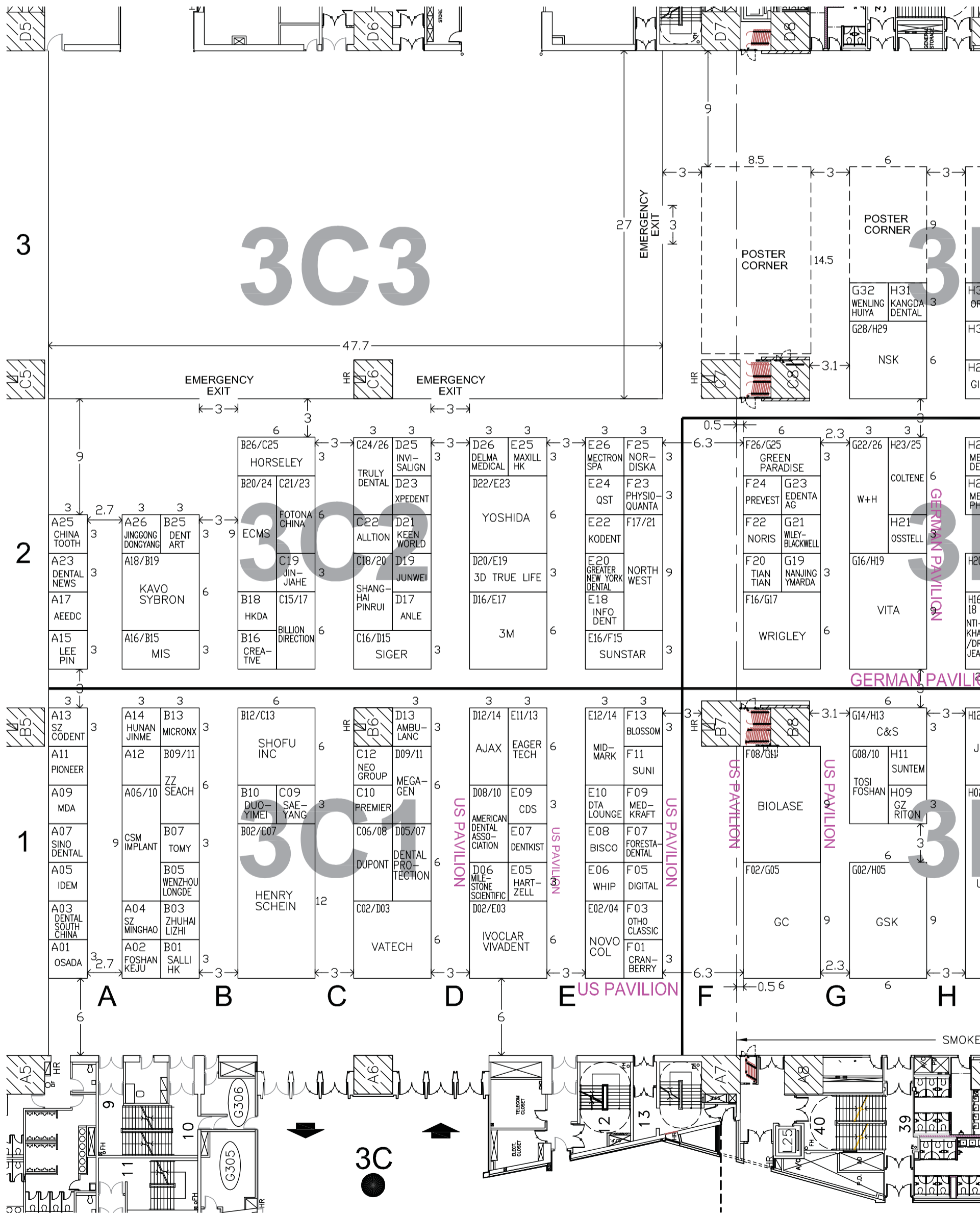
DESIGNED, FABRICATED AND BUILT IN THE USA

Also Available: Dr. Suni Plus,
the worlds thinnest sensor!

SUNI

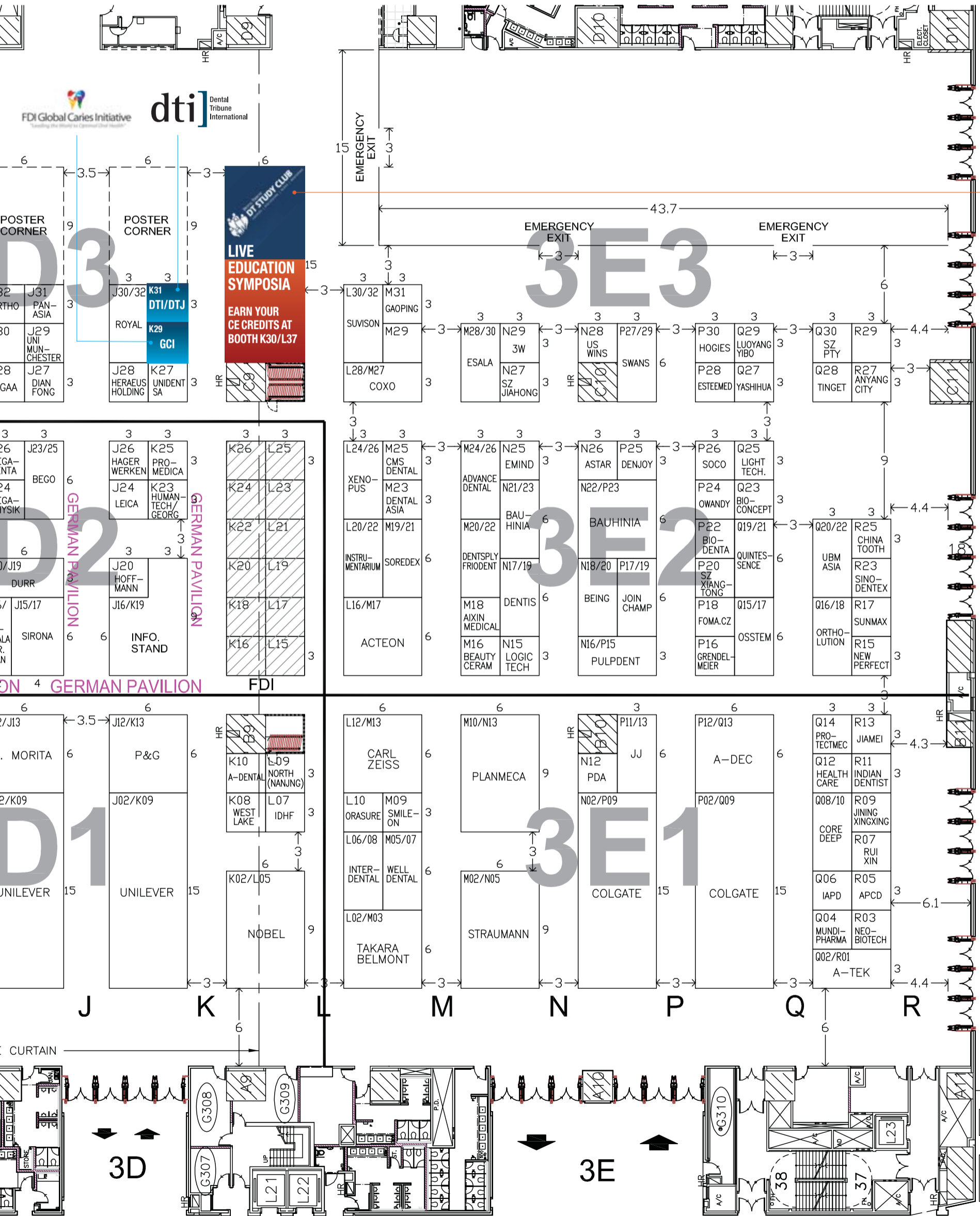
FDI Hong Kong, 29 August–1 September

This plan is subject to change. Last update was 13 August, 2012. Copyright



September 2012 – Floor plan, HKCEC, Hall 3C-E

Copyright Reserved 2012. Reproduction may only be granted by contacting the FDI.



Register for FREE on www.DTStudyClub.com

FDI Hong Kong 2012 – Exhibitors List

This list is subject to change. Last update was 31 July, 2012. Copyright Reserved 2012. Reproduction may only be granted by contacting the FDI.

Company	Booth(s)	Company	Booth(s)	Company	Booth(s)	Company	Booth(s)	Company	Booth(s)
3M Hong Kong Ltd.	D16/E17	Chicago Dental Society	E09	eMind Biotech M.R. Co., Ltd.	N25	Hartzell & Son	E05	Latin America Dental News	
3DTrueLife Limited	D20/E19	China Tooth		Esala Foshan Medical		HealthCare Dental Ltd.	Q12	(CMP Medica-UBM	
3W DENTALLAB	M38	Material Exchange	A25, R25	Equipment	M28/30	Henry Schein Inc.	B02/C07	Medica Asia)	Q20/22
Acteon	L16/M17	China Way Instrument Co.	E07	Foma Bohemia Ltd.	P18	Heraeus Holding GmbH	J28	Lee Pin Enterprise Co., Ltd.	A15
A-dec International Inc.	P12/Q13	CMS Dental	M25	Foma CZ	P18	Hoffman Dental		Leica Microsystems Ltd.	J24
Advance Dental		Colgate Palmolive		Forestadental Group		Manufaktur GmbH	J20	Logic Tech HK Ltd.	N15
Consulting Ltd.	M24/26	Company	No2/Q09	Technology	F07	Hogies Australia Pty Ltd.	Q26	Luoyang Yibo Precision	
AEEDC Dubai	A17	Coltène/Whaledent AG	H23/25	Foshan Anle Apparatus		Hong Kong		Bearing Co., Ltd.	Q37
Alltion (Wuzhou) Co., Ltd.	N29	ConXept Ltd.	P28	Co., Ltd.	D17	Dental Association	B18/24	Maxill HK Ltd.	E25
Ambulanc (Shenzhen)		COXO Medical		Foshan Core Deep Medical		Horseley Company Ltd.	B26/C25	Mectron s.p.a.	E26
Tech Co., Ltd.	D13	Instrument Co., Ltd.	L28/M27	Apparatus Co., Ltd.	Q08/10	HumanTech Germany GmbH	K23	Medkraft Othodontics	F09
Anyang City Kangda Dental		Cranberry (M) Sdn Bhd	F01	Foshan Duoyimei Medical		Hunan Jinme		Megadenta	H26
Abrasives Co., Ltd.	H31	Creative Dental	B16	Instrument Co., Ltd.	B10	Dental Handpiece Co., Ltd.	A14	Megagen Hong Kong	D09/11
Anyang City U.S. Wins Dental		CSM Implant	A06/10	Foshan Joinchamp		IDEM Singapore	A09	MEGA-PHYSIK Germany	
Materials Sales Co., Ltd.	Q38	Danisco (UK) Limited	Co6/08	Medical Device Co., Ltd.	P17/19	IDHF (The International		GmbH	H24
APCD São Paulo	R05	Delma Medical Instrument	D26	Foshan Keju Medical		Dental Health Foundation)	L07	Micronx Co., Ltd.	B13
APDC	A11	Denjoy Dental Co., Ltd.	P25	Apparatus Co., Ltd.	A02	Infodent	E18	Midmark	E12/14
Astar Orthodontics Inc	N26	Dental Asia	A05	Foshan Suntem Medical		Institute Straumann AG	Mo2/No5	Milestone Scientific	Do6
A-TEK	Q02/R01	Dental News (Pakistan)	A23	Apparatus Co., Ltd.	H11	Instrumentarium Dental	L20/22	MIS Hong Kong Ltd.	A16/B15
Bauhinia Dental Ltd.	N21/P23	Dental Protection	Do5/07	GC Corporation	Fo2/Go5	Interdental Ltd.	Lo6/08	Monitex Industrial Co., Ltd.	H30
Beauty Ceram Hk Ltd.	M16	Dental South China	A03	Georg Schick Dental GmbH	K23	International Association for		Mundipharma	
BEGO Bremer Goldschlägerei	J25	Dental Tribune International GmbH/		German Federal Ministry		Paediatric Dentistry (IAPD)	R17	(Hong Kong) Ltd.	Q04
BEGO Medical GmbH	J23	DT Study Club	K31, K30-L37	of Economics	J16/K19	Invisalign Hong Kong Ltd.	D25	Nanchang Light Technology	
Beijing Foshan		DentArt Instrument Mfg Co.,/		GlaxoSmithKline Ltd.	Go2/Ho5	Ivoclar Vivadent AG	Do2/Eo3	Exploitation Co., Ltd.	Q25
Medical Equipment	N18/20	DentaLuck	B25	Greater New York		J. Morita	H12/J13	Nanjing Jin Jiaye I./E. Co., Ltd.	C19
Billion Direction Technology		Dentis Co., Ltd.	N17/19	Dental Meeting	R21	JADA/ADA	D10	Nanjing Ymarda	
Technology Co., Ltd.	C15/C17	Dentkist Inc	R37	Green Paradise		Jinan Jiamei Dental Material		Optical Instrument Factory	G19
Bioconcept Co., Ltd.	Q23	Dian Fong		International Ltd.	F26/G25	Company	R13	Neo Group Ltd	C12
Biodenta Corporation	P22	Industrial Company Ltd.	J27	Guangzhou Ajax Medical		Jinan Yashihua Dental		Neobiotech	R03
Biolase	Fo8/G11	Digital Docs	Fo5	Equipment & Co., Ltd.	D12/14	Materials	Q27	Nobel Biocare	
Biotech Dental Ltd.	M20/22	Dr. A. Grendelmeier & Co.	P16	Guangzhou Riton Biotech		Jining XingXing Medical		Services AG	Ko2/Lo5
Bisco Inc.	E08	Dr. Jean Bausch GmbH		Co., Ltd.	Ho9	Equipment Co., Ltd.	Q28	Nordiska Dental AB	F25
Blossom Mexpo Intl.	F13	& Co. KG	H16/18	Hager & Werken	J26	Johnson & Johnson	P11/13	Noris Medical Ltd.	F22
C&S Dental Technology Ltd.	G14/H13	DTA Lounge	E10	Hangzhou Westlake		Kallmanexpo	E10	North (Nanjing) Instrument	
Carl Zeiss Meditec AG	L12/M13	Dürr Dental AG	H20/J19	Biomaterial	Ko8	KaVo Sybron China	A18/B19	Technology Industries Group	Lo9
Changsha Tiantian Dental		Eager Tech Company Ltd.	E11/13	Hanzhong Rui Xin Precision		Keenworld Technology Ltd.	D21	North Henan Anyang City Dental	
Equipment Co., Ltd.	F20	Edenta AG	G23	Tools Manufactory	Q30	Kodent Trading Co., Ltd.	E22	Material Limited Company	P37

AD



Booth K25
German Pavilion

PROMEDICA

Highest quality made in Germany



- high quality glass ionomer cements
- first class composites
- innovative compomers
- modern bonding systems
- materials for long-term prophylaxis
- temporary solutions
- bleaching products ...

All our products convince by

- excellent physical properties
- perfect aesthetical results



Glass ionomer filling cement

- perfectly packable consistency
- excellent durable aesthetics



Light-curing nano-ceram composite

- universal for all cavity classes
- highly aesthetic
- virtually no residual monomers
- outstanding biocompatibility



Light-curing micro-hybrid composite

- universal range of application
- high filler content
- excellent physical properties
- fast and easy application



Dental desensitising varnish

- treatment of hypersensitive dentine
- fast desensitisation
- fluoride release
- easy and fast application

PROMEDICA Dental Material GmbH
 phone: +49 43 21/5 41 73 · fax +49 43 21/5 19 08 · eMail: info@promedica.de · Internet: www.promedica.de



Company	Booth(s)
Novocol	E02/04
NSK/Nakanishi Inc.	G28/H29
NTI-Kahla GmbH	H16/18
OMD – Portuguese Dental Association	N12
OraSure Technologies Inc	L10
Ortho Anderson	P38
Ortho Classic	F03
Ortholution Co., Ltd.	Q16/18
Osada Electric Co., Ltd.	A01
Osstell	AB H21
Osstem Hong Kong Ltd.	Q15/17
Owandy	P24
Panasia	J31
PhysioQuanta	F23
Pioneer of Dentistry Column	A12
Planmeca Oy	M10/N13
Premier Dental Products Company	C10
Prevest Denpro Limited	F24
Procter & Gamble HK Ltd.	J12/K13
Promedica	K25
Pulpdent Coporation	N16/P15
Quintessence	A19/21
Returning Swans	P27/29
Royal Dental Laboratory	J30/32
Saeyang	C09
Salli HongKong Ltd.	B01
Shanghai A-Dental Products Co., Ltd.	K10
Shanghai Pinrui Medical Equipment Co., Ltd.	C18/20
SHENZHEN CODENT INDUSTRY Co., Ltd.	A13
Shenzhen Jiahong Dental Technological Development Co., Ltd.	N27
SHENZHEN MINGHAO DENTURES Co., Ltd.	A04
ShenZhen New Perfect Exact Dental Research Co., Ltd.	R15
SHENZHEN PTY MEDICAL DEVICE Co., Ltd.	N37
SHENZHEN XIANGTONG PHOTOELECTRICITY TECHNOLOGY Co., Ltd.	P20
SHOFU INC.	B12/C13
Sino Dental	A07
Sino-Dentex Co., Ltd.	R23
Sirona Dental Systems Hong Kong Ltd.	J15/17
Smile-on Ltd.	M09
SOCO Precision Instrument Co., Ltd.	P26
Soredex	M19/21
Suni	F11
Sunmax Biotechnology Co., Ltd.	R27
Sunstar	E16/15
Suvison Europe	R19
Suzhou Junwei Medical Equipment Co., Ltd.	D19
Takara Belmont Corporation	Lo2/M03
Tesco Dental (HK) Ltd.	G16/H19
The Indian Dentist	R11
The Yoshida Dental Mfg. Co., Ltd.	D22/E23

Company	Booth(s)
Tianjin Aixin Medical Equipment Co., Ltd.	M18
Tianjin Jinggong Dongyang International Trade Co.	A26
Tinget Autoclaves	N38
Tomy International Inc	B07
Tosi Foshan Medical Equipment	Go8/10
Truly Dental Material Co., Ltd.	C24/26
Unident SA	K27

Company	Booth(s)
Unilever ULLtd.	Ho2/K09
University of Manchester	J29
Vatech Medical	Co2/Do3
VITA Zahnfabrik	G16/H19
W&H Dentalwerk Bürmoos GmbH	G22/26
Well Dental Laboratory Co., Ltd.	Mo5/07
WENLING HUIYA MEDICAL APPARATUS FACTORY	G32

Company	Booth(s)
WENZHOU LONGDE MEDICAL TECHNOLOGY Co., Ltd.	B05
Whip Mix	E06
Wiley-Blackwell	G21
Wrigley	F16/G17
Wuhan Gigaa Optronics Technology Co., Ltd.	H28
Xenopus (Tri Hawk)	L24/26
Xian Yang North West Medical Instrument(Group)Co., Ltd.	F17/21

Company	Booth(s)
Xpedent Ltd.	D23
Zhejiang Protect Medical Equipment Co., Ltd.	Q14
ZHENGZHOU SEACH MEDICALEQUIPMENT Co., Ltd.	B09/11
ZHUHAI LIZHI DENTAL INSTRUMENT Co., Ltd.	B03
Zhuhai Siger Medical Equipment Co., Ltd.	C16/D15

fdi
FDI World Dental Federation

FDI connects with the future of dental medicine



FDI Global Caries Initiative

“Leading the World to Optimal Oral Health”

www.GlobalCariesInitiative.org

Connect with the future:
visit booth **K29**

FDI's Global Caries Initiative (GCI), launched in 2009, seeks to unite a broad alliance of key influencers and decision makers behind a common goal: **to effect fundamental change in health systems and individual behaviour to realize the overarching vision to stop caries by 2020.**

— FOUNDING SPONSORS —










Beautiful Injectable

SHOFU's new Beautiful Injectable wants you to inject beauty and strength into your restoration. This universal direct aesthetic restorative has a novel resin micro-structure that was developed to impart superior mechanical properties for improved performance even in load bearing areas. According to the company, the paste offers ideal viscosity and a non-tacky, non-droopy



consistency, so that restorations can be easily shaped as clinicians extrude the material from the syringe.

By optimising the filler-matrix complex, Beautiful Injectable controls light diffusion within in order to mimic the optical characteristics of natural teeth, the company said. With inherent natural aesthetics, fluorescence and opalescence, they said this re-

storative is intended to carve a niche in direct cosmetic dentistry by creating indiscernible restorations. As a member of the successful Giomer product family, Beautiful Injectable also contains S-PRG fillers to provide continuous fluoride protection and unique anti-plaque effect.

The material is available in 2.2 gram syringes with disposable needle tips

for cross infection control. The syringe delivery allows the paste to be injected conveniently by the clinician into the restoration site for reduced instrumentation and a shorter working time.

SHOFU INC., SINGAPORE
www.shofu.com.sg
Booth B12/C13

AD

The 32nd Moscow International Dental Forum

Moscow 2012

The 32nd Moscow International Dental Forum

Dental-Expo

international dental fair

September 17-20

Crocus Expo exhibition grounds

more than
450
exhibitors

more than
25000
attendees

more than
35
countries

www.dental-expo.com

DENTALEXPO®

World-leading instruments

For more than four decades, Abrasive Technology has been recognised as one of the world's leading manufacturers of super-abrasive grinding wheels and tools but perhaps nothing defines the company's commitment to precision more than its dental products — most notably its Two Striper diamond dental instruments. In fact, the company says to have taken extra steps to ensure that these products are not only safer, but better balanced and easier to use.



AT's founders developed a unique diamond bonding process called P.B.S. that makes it possible to manufacture grinding tools that are superior to other products on the market, the company said. The process is said to increase productivity and part consistency simply because it will last longer, cut faster, run cooler and load less.

According to the company, the process is one of the most effective and innovative bonding processes in the industry. It's a science that the company said to have helped to transform itself—and a craft that it's working every day to perfect.

Through continuous innovation, product development and enhancement, Abrasive Technology aims to meet the most demanding specifications and solve the most challenging applications. From disks and trimming wheels to instruments and files, its dental products epitomise high quality, attention to detail and superior craftsmanship and makes them a number one choice in the industry.

For more information about the company's line of products, FDI visitors are invited to a Dental Tribune Study Club Symposia session at booth K30 inside the exhibition hall.

ABRASIVE TECHNOLOGY, USA
www.abrasive-tech.com
Booth K31



No Pre-Registration Fee

**The Largest
Dental Meeting/
Exhibition/Congress
in the United States**

MARK YOUR CALENDAR

**Scientific Meeting:
Friday - Wednesday,
November 23 - 28**

**Exhibit Dates:
Sunday - Wednesday,
November 25 - 28**

ATTEND AT NO COST
Never a pre-registration fee at the
Greater New York Dental Meeting

MORE THAN 600 EXHIBITORS
Jacob K. Javits Convention Center 11th Ave.
between 34-39th Streets (Manhattan)

HEADQUARTERS HOTEL
New York Marriott Marquis Hotel

LIVE DENTISTRY ARENA - NO TUITION

**LATEST DENTAL TECHNOLOGY
& SCIENTIFIC ADVANCES**

MORE THAN 350 SCIENTIFIC PROGRAMS
Seminars, Hands-on Workshops, Essays
& Scientific Poster Sessions as well as
Specialty and Auxiliary Programs

**EDUCATIONAL PROGRAMS
IN VARIOUS LANGUAGES**

SOCIAL PROGRAMS FOR THE ENTIRE FAMILY

**ENJOY NEW YORK CITY AT ITS BEST
DURING THE MOST FESTIVE TIME
OF THE YEAR!**

FOR MORE INFORMATION:
Greater New York Dental Meeting®
570 Seventh Avenue - Suite 800
New York, NY 10018 USA
Tel: (212) 398-6922 / Fax: (212) 398-6934
E-mail: victoria@gnydm.com

**GREATER
NEW YORK
DENTAL MEETING**

WWW.GNYDM.COM

Sponsored by the New York County Dental Society and the Second District Dental Society

2 0 1 2

A premier global destination

Special administrative region attracts millions in capital and visitors each year

There is probably no other date in Hong Kong's recent history as significant as 1 July. On a stormy Tuesday night back in 1997, millions of people took to the streets in unprecedented celebrations when the People's Republic of China finally

took over control of the territory after 156 years of British rule.

While the handover was considered a fresh start by many Hong Kongers, it definitely marked Britain's final act as a colonial superpower.

In the joint declaration signed with China already in 1984, however, both parties had agreed to leave the colony's existing economic system untouched for another 50 years. Owing to this component of the Sino-British declaration, Hong Kong was able to



Hong Kong (DTI/Photo Norman Chan)



Hong Kong (DTI/Photo Ian D Walker)

become the economic powerhouse we know today.

With a populace of slightly over seven million people, the former colony now produces a gross domestic product higher than those of states like Denmark and Portugal. It is also considered one of the most important international financial centres. According to global management consulting firm McKinsey, its stock exchange, already among the world's top ten when it comes to capitalisation, attracted the most capital in the world for the second consecutive year in 2011. While the government recently had to cut growth forecasts owing to the global economic slowdown, consumption in the city remained stable owing to a sound job sector and increases in income.



Hong Kong business district (DTI/Photo Damini)

Similar to its economic success, the city has transformed itself into a first class travel destination, making tourism a major source of income. Boosted by attractions like Hong Kong Disneyland, which was opened in 2005, and major events like the recently held International Dragon Boat Championships, it sees 42 million visitor arrivals per year, a number currently only exceeded throughout the Asia Pacific region by Malaysia and mainland China.

"These results certainly underline Hong Kong's status as a preferred international travel destination and as Asia's world city," said James Tien, Chairman of the Hong Kong Tourism Board, in August. "We have already planned the launch of a series of mega events in the coming months to

AD

Pacific Dental Conference

Save these dates!

March 7-9, 2013 Vancouver, BC

Join us in Vancouver for Canada's Premier Dental Conference!



- Earn up to 15 hours of CE credits during three days of lectures and hands-on courses
- Over 100 speakers and 150 open sessions and hands-on courses to choose from, as well as the Live Dentistry Stage in the Exhibit Hall
- Enjoy the largest two day dental tradeshow in Canada featuring all the newest equipment and products at over 500 exhibitor booths in the spacious PDC Exhibit Hall
- Lunches and Exhibit Hall Receptions included in the registration fee
- Online hotel reservations now available
- Shopping, hotels, restaurants and breath-taking Stanley Park are all within blocks of the spectacular Vancouver Convention Centre
- Excellent Spring skiing and snowboarding on local mountains or drive the scenic Sea to Sky Highway to Whistler/Blackcomb



Easy online registration opens October 15th, 2012 at ...

www.pdconf.com



More reliable caries detection



© Prof. Dr. Wolfgang Buchalla



Scan the QR code
with your mobile phone
for more information
on Proface

Caries seen differently: Illuminating opened cavities with the Proface light probe clearly reveals dentine infected with caries. This innovative method supports selective, minimally invasive excavation and minimises the risk of caries recurrence!

wh.com



prof^oface



fdi page 20

further enhance Hong Kong's appeal and provide our tourist partners with different business platforms." According to Tien, highlights this year will include the Hong Kong Mid-Autumn Festival, which will take place in September/October and will see a giant lantern erected at Victoria Park on Hong Kong Island, among other things.

Owing to increasing competition from Hong Kong's greater brother in

the North and countries like Taiwan, the board which operates under the HK government, already began strategising Hong Kong's development as a tourist destination in the late 1990s. As a first step, travel restrictions within China were eased through the Individual Visit Scheme almost a decade ago. Since then, travel between mainland China and Hong Kong has skyrocketed to over 15 million visitors per year.

Funding for the Mega Events Fund has also recently been extended

until 2014. The financial assistance scheme, worth hundreds of millions of HK dollars, was established in 2009 in order to give non-profit organisations the means to host their meetings and events in Hong Kong.

As well as its large share of Chinese visitors, the city attracts millions of visitors from around the globe, of which many have decided to stay. Therefore, the city's cultural and culinary scene is as diverse as in any other major city in the world. With two 3-star and seven 2-star restaurants, Hong



A variety of dim sum in bamboo steam. (DTI/Photo Sutsaiy Sangham)

Kong now offers greater culinary excellence than London or San Francisco. Just last month, two Michelin-starred French-Italian chef Philippe Leveille announced the opening of a new Italian restaurant called l'Altro in the Central District.

Hong Kong is also the third largest art market after the US and China, drawing thousands of visitors to its International Art Fair held every year in May.

Despite its receptiveness to foreign influences, however, the city has never forgotten its Chinese roots, which will become important in 2047, when Hong Kong's guaranteed autonomy expires. Although relations with the motherland are close, observers are questioning whether the city, which is largely dependent on trade, can maintain its economic vitality over the next 30 years alongside a prospering China.

Until then, at least Hong Kong is likely to remain Asia's premier global destination.



Flag of People's Republic of China and Hong Kong Special Administrative region. (DTI/Photo Norman Chan)

The Hong Kong Tourism Board provides more information on city tours, sights and events. Its main visitor centres are located at the airport (arrivals level, Terminal 1) and at the Peak Piazza (between The Peak Tower and The Peak Galleria).

RESOURCES

- www.discoverhongkong.com
- www.timeout.com.hk
- www.lonelyplanet.com/china/hong-kong
- travel.nytimes.com/travel/guides/asia/china/hong-kong/
- www.fodors.com/world/asia/china/hong-kong/
- www.diarygrowingboy.com (HK food blog)

AD

58 ExpoDental AMMIC Internacional world trade center Mexico City del 14 al 18 de Noviembre del 2012

México Amic Dental

Evita largas filas, imprime tu gafete en línea: www.amicdental.com.mx

70 aniversario

Mercedes-Benz

Under the Patronage of
H. H. Sheikh Hamdan Bin Rashid Al Maktoum
Deputy Ruler of Dubai, Minister of Finance
President of the Dubai Health Authority

تحت رعاية
سمو الشيخ حمدان بن راشد آل مكتوم
نائب حاكم دبي، وزير المالية
رئيس هيئة الصحة بدبي

欢迎来到迪拜!



Delivering Science & Technology

UAE INTERNATIONAL DENTAL CONFERENCE & ARAB DENTAL EXHIBITION

5 - 7 February, 2013

Dubai International Convention & Exhibition Centre

www.aeedc.com

- Excellent platform to network with over **28,000** dental professionals and oral health care providers.
- More than **900** exhibitors from **80** representing countries.
- **3 days** of quality education and business opportunities.



Find AEEDC Dubai on

BlackBerry
PIN: 286FC1C7



twitter



facebook



LinkedIn



YouTube



Organised by



In Cooperation with



Strategic Partner



Supported by



Strategic Sports Club Partner



ADA CERP | Continuing Education
Recognition Program

INDEX Conferences & Exhibitions Organisation Est is an ADA CERP Recognized Provider.
ADA CERP is a service of the American Dental Association to assist dental professionals in identifying
quality providers of continuing dental education. ADA CERP does not approve or endorse individual courses
or instructors, nor does it imply acceptance of credit hours by boards of dentistry.
INDEX Conferences & Exhibitions Organisation Est. designates this activity for
continuing education credits on an hour for hour basis.

INDEX® Conferences & Exhibitions Organisation Est.

Dubai Healthcare City, Ibn Sina Medical Complex #27, Block B, Office 203 | P.O. Box: 13636, Dubai, United Arab Emirates
Tel: +971 4 3624717, Fax: +971 4 3624718 | E-mail: info@aeedc.com, Website: www.index.ae



What's on Wednesday, 29 August

FDI SOCIAL PROGRAMME

WELCOME CEREMONY

The welcome ceremony is a not-to-miss event at every FDI Annual World Dental Congress. Not only does it mark the official start of the congress, but it also gives the host city the opportunity to present itself in the best possible way. The organisers of

this year's event have arranged a unique performance that will reflect Hong Kong's diverse traditions, as well as its rich culture and history.

The ceremony will be held today from 18:30 to 20:00 in the Grand Hall on Level 3 of the HKCEC. Admission starts at 17:45 and is free for registered congress participants.

EXHIBITION

LES LUMIÈRES IMAGINAIRES COLLECTIVE LIGHTING INSTALLATIONS

Venue: Agnès B.'s LIBRAIRIE GALERIE, daily from 11:30 to 20:00
www.frenchmay.com

As part of Le French May, an annual art festival organised by the Con-



Les Lumières Imaginaires Collective Lighting Installations

sulate General of France in collaboration with the Alliance Française and supported by the Leisure and Cultural Services Department of Hong Kong, this exhibition by stage designer and media artist Chi-Yung Wong transports visitors to a place separated from the real world. His latest work is a unique mix of light and music written by contemporary French and HK artists. Visitors can immerse themselves in this visual wonderland until Saturday, 1 September. Admission to the installation is free.

FILM

HIDDEN AGENDA THE MOVIE

Venue: Hidden Agenda Live House, 20:00
hiddenagenda.hk

The Hidden Agenda Live House is former band-practice room in the Kwun Tong district that in 2009 was transformed by a couple of post-80s music lovers into a place for live indie music. Today, it is a hot spot for local and foreign bands alike. This documentary film, part of the 2012 Venice Architecture Biennale Hong Kong Exhibition, tells the short but eventful story of this venue, which was twice evacuated by the Hong Kong government. After the screening, there will be special performances.



Chinese Opera (DTI/Photo Keng Po Leung)

MUSIC AND THEATRE

"THE DEITY NA CHA", CANTONESE OPERA PERFORMANCE

Venue: Yau Ma Tei Theatre, 19:30
www.lcsd.gov.hk

The historical building in which the theatre is housed is the only remaining pre-World War II theatre in Kowloon and in the past it screened erotic films during financially difficult times. Having undergone significant renovations since 1998, the building at the junction of Waterloo Road and Reclamation Street now hosts a modern 300-seat auditorium designed solely for Cantonese opera. Tonight's performance is based on an ancient Chinese legend about a man who tangles with the gods and sacrifices himself for the common man, and is then resurrected as an immortal being.

AD

中华口腔医学会 第14次全国口腔医学学术会议(2012年会) 2012(西安)国际口腔设备器材博览会 The 14th CSA Annual Meeting & 2012 China Dental Show

主承办 / 协办单位 / 支持单位
Organizer / Co-organizer / Supported By

会议日期: 2012年9月13-16
Meeting Dates: 13-16 September, 2012

展览日期: 2012年9月13-15
Exhibition Dates: 13-15 September, 2012

西安曲江国际会展中心
Xi'an Qujiang International
Conference & Exhibition Center

*The Annual Meeting Place for Decision-Makers of
Chinese Dental Community!*

For more information contact:
Mr. Wei P: +86 10 84556616
E: Qinghua.wei@reedsinopharm.com

Mr. Liu P: +86 10 84556607
E: yao.liu@reedsinopharm.com

www.ChinaDentalShow.com

Visit us at
booth K31

Introducing

PreXion3D *Elite*

WITH CLEARimage™ SCANNING TECHNOLOGY

NEW Up to 53% Reduction in radiation

NEW Up to 50% Increase in scanning speed

NEW Four new scanning modes, all faster and with reduced radiation

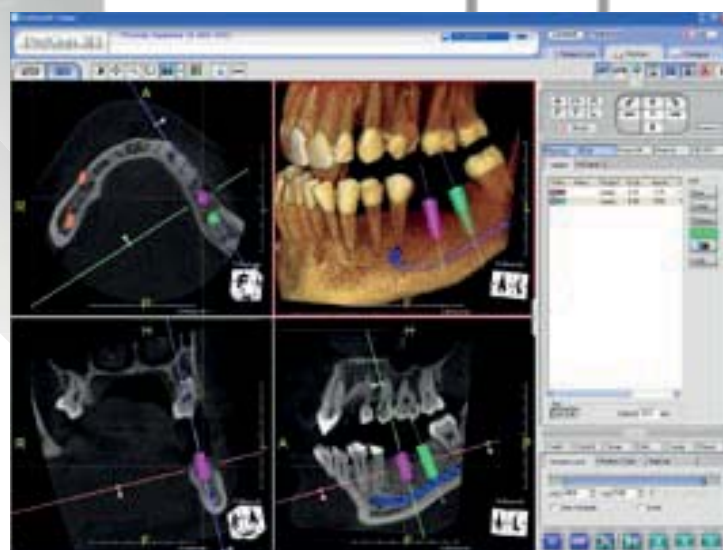
NEW Advanced Software Features

- Implant Planning Functions
- Fusion/Stitching Mode
- Endodontic Tracing Tool that allows for identifying root structures

Smallest focal spot at 0.15mm

Industry Leading High Quality, High Definition, Highly Diagnostic Images

Compatible with ALL implant software planning systems



PreXion

The World Leader in High Quality,
Highly Diagnostic 3D CBCT Images.

www.PreXion.com



DENTAL TRIBUNE
DT STUDY CLUB
 COURSES | DISCUSSIONS | TECHNOLOGY | MENTORING

**EARN
 YOUR C.E.
 CREDITS AT
 BOOTH
 K30**

DAILY LIVE Education Symposia at FDI Hong Kong 2012

Find us at **BOOTH K30** in the exhibition hall



WEDNESDAY, AUGUST 29	THURSDAY, AUGUST 30	FRIDAY, AUGUST 31	SATURDAY, SEPTEMBER 1
11.00 A.M. ABRASIVE TECHNOLOGY 'PRECISION TOOLS - WHERE YOU NEED THEM MOST' SABINE NAHME	11.00 A.M. OVERVIEW AND COMPARISON OF CLINICAL AND DIAGNOSTIC ASPECTS IN VOLUME TOMOGRAPHY DR. DAN MCOWEN ICBI DIRECTOR OF EDUCATION	11.00 A.M. ABRASIVE TECHNOLOGY 'PRECISION TOOLS - WHERE YOU NEED THEM MOST' SABINE NAHME	11.00 A.M. SUCCESS FACTORS IN DENTAL OFFICES: EFFICIENT STAFF MANAGEMENT PASCAL STEICHEN PRACTICE MANAGEMENT EXPERT
12.00 P.M. CHANGING THE FACE OF DENTISTRY MYLES HOLT DIRECTOR OF THE AUSTRALIAN ACADEMY OF DENTO-FACIAL AESTHETICS (AADFA)	12.00 P.M. GCI: "HOW TO PREVENT CARIES IN THE DENTAL PRACTICE" VIDEO PRESENTATION PROF. ELMAR REICH	12.00 P.M. CHANGING THE FACE OF DENTISTRY MYLES HOLT DIRECTOR OF THE AUSTRALIAN ACADEMY OF DENTO-FACIAL AESTHETICS (AADFA)	12.00 P.M. CURRENT ORTHODONTIC PRACTICE: RME OR SME, NEW DEVELOPMENTS IN EXPANSION OF THE PALATE, FOR THE GENERAL DENTAL PRACTITIONER DR. DEREK MAHONY
13.00 P.M. GLOBAL ORAL HEALTH PROJECT DR. PETER COONEY	13.00 P.M. ABRASIVE TECHNOLOGY 'PRECISION TOOLS - WHERE YOU NEED THEM MOST' SABINE NAHME	13.00 P.M. CBCT IN AND TRADITIONAL X-RAY OUT? DR. DAN MCOWEN ICBI DIRECTOR OF EDUCATION	13.00 P.M. CBCT IN AND TRADITIONAL X-RAY OUT? DR. DAN MCOWEN ICBI DIRECTOR OF EDUCATION
14.00 P.M. CBCT IN AND TRADITIONAL X-RAY OUT? DR. DAN MCOWEN? ICBI DIRECTOR OF EDUCATION	14.00 P.M. SUCCESS FACTORS IN DENTAL OFFICES: EFFICIENT MARKETING AND COMMUNICATIONS PASCAL STEICHEN PRACTICE MANAGEMENT EXPERT	14.00 P.M. GCI: TRANSFERRING KNOWLEDGE INTO ACTION - CONTINUING EDUCATION FOR DENTAL PRACTITIONERS NERMIN YAMALI FACULTY OF DENTISTRY OF UNIVERSITY OF ANKARA, TURKEY	14.00 P.M. GCI: THE FDI CARIES MATRIX VIDEO PRESENTATION DR. ANNEMARIE A. SCHULLER
15.00 P.M. SUCCESS FACTORS IN DENTAL OFFICES: EFFICIENT TREATMENT PROTOCOLS PASCAL STEICHEN PRACTICE MANAGEMENT EXPERT	15.00 P.M. GCI: THE FDI CARIES MATRIX VIDEO PRESENTATION DR. ANNEMARIE A. SCHULLER	15.00 P.M. SUCCESS FACTORS IN DENTAL OFFICES: EFFICIENT PRACTICE MANAGEMENT PASCAL STEICHEN PRACTICE MANAGEMENT EXPERT	15.00 P.M. ABRASIVE TECHNOLOGY 'PRECISION TOOLS - WHERE YOU NEED THEM MOST' SABINE NAHME

SUPPORTED BY:



REGISTER FOR FREE ON

www.DTStudyClub.com

ADA C.E.R.P.® Continuing Education Recognition Program

Useful information

ORGANISERS

FDI WORLD DENTAL FEDERATION (BOOTH K16/125)

Tour de Cointrin
Avenue Louis Casaï 84
Case Postale 3
1216 Genève-Cointrin
SWITZERLAND

HONG KONG DENTAL ASSOCIATION

8/F., Duke of Windsor
Social Service Building
15 Hennessy Rd., Wanchai
HONG KONG

CONGRESS VENUE

HONG KONG CONVENTION AND EXHIBITION CENTRE

1 Expo Drive, Wanchai
Hong Kong

EXHIBITION HOURS

- Wednesday, 29 August:
10:00 – 18:00
- Thursday, 30 August:
10:00 – 18:00
- Friday, 31 August:
10:00 – 18:00
- Saturday, 1 September:
10:00 – 16:00

VISITORS ACCESS is absolutely free.

CONGRESS REGISTRATION

Onsite registration is possible from Tuesday, 28 August, to Saturday, 1 September, 7:00 – 18:00. Fees range from CHF330 (US\$337) and CHF600 (US\$613).

FDI PAVILLION

At booth K16/125 in the exhibition hall, visitors will be able to find more information about the FDI, its 112-year history, as well as its diverse programmes and activities.

OFFICIAL LANGUAGES OF THE CONGRESS

- English
- Mandarin (specific sessions only)

CERP

Delegates who have registered for the congress are eligible to receive continuing education points (20 points maximum) by attending scientific sessions during the meeting.

PRESS AND MEDIA

Free copies of the *Worldental Daily* congress newspaper will be available onsite and provide visitors with the latest news, as well as information about the congress, new products and what to do in Hong Kong.

EMBASSIES AND CONSULATES

Foreign representation offices can provide help in emergencies situation like lost passports. They can also assist with travel arrangements or give legal advice.

Australian Consulate-General
23/F Harbour Centre, 25 Harbour Road,
Phone: +852.2827.8881

British Consulate General
1 Supreme Court Road,
Phone: +852.2901.3000

**Consulate General of Canada/
Consulat Général du Canada**
12th to 14th Floor,
One Exchange Square Central,
Phone: +852.3719.4700

Deutsches Generalkonsulat
21/F, United Centre, 95 Queensway,
Admiralty, Phone: +852.2105.8788

Consulate General of India
Unit A, 16th Floor, United Centre,
95 Queensway,
Phone: +852.3970.9900

Consulate-General of Japan
46-47/F., One Exchange Square,
8 Connaught Place,
Phone: +852.2522.1184

**Consulate General
of the Republic of Korea**
5/F, Far East Finance Centre,

16 Harcourt Road,
Phone: +852.2529.4141

**Consulate General
of the United States of America**
26 Garden Road, Hong Kong,
Phone: +852.2523.9011

EMERGENCY NUMBERS

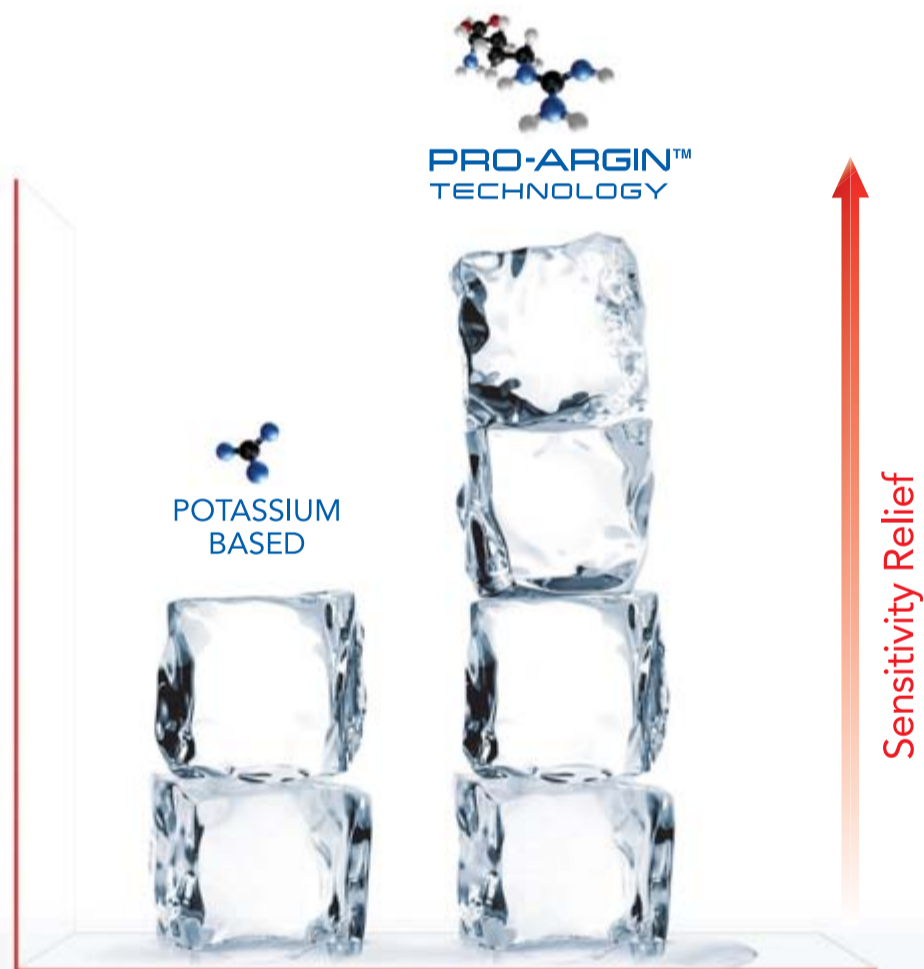
- Police, fire, ambulance: 999
 - Police Hotline: +852.2527.7177
- Information provided in this section are subject to change.*



(DTI/Photo ArtisticPhoto)

AD

SUPERIOR TECHNOLOGY MEANS 2 TIMES THE SENSITIVITY RELIEF¹



Results from an 8-week, examiner-blind, parallel-group study of 118 subjects comparing a Colgate® Sensitive Pro-Relief™ regimen and a potassium-based regimen, both consisting of a toothpaste, mouthwash, and toothbrush, at 2 weeks.

For your patients with hypersensitivity, recommend the Colgate® Sensitive Pro-Relief™ at-home regimen, clinically proven to deliver 2 TIMES the sensitivity relief vs a potassium-based regimen after 2 weeks.¹

Colgate®

YOUR PARTNER IN ORAL HEALTH

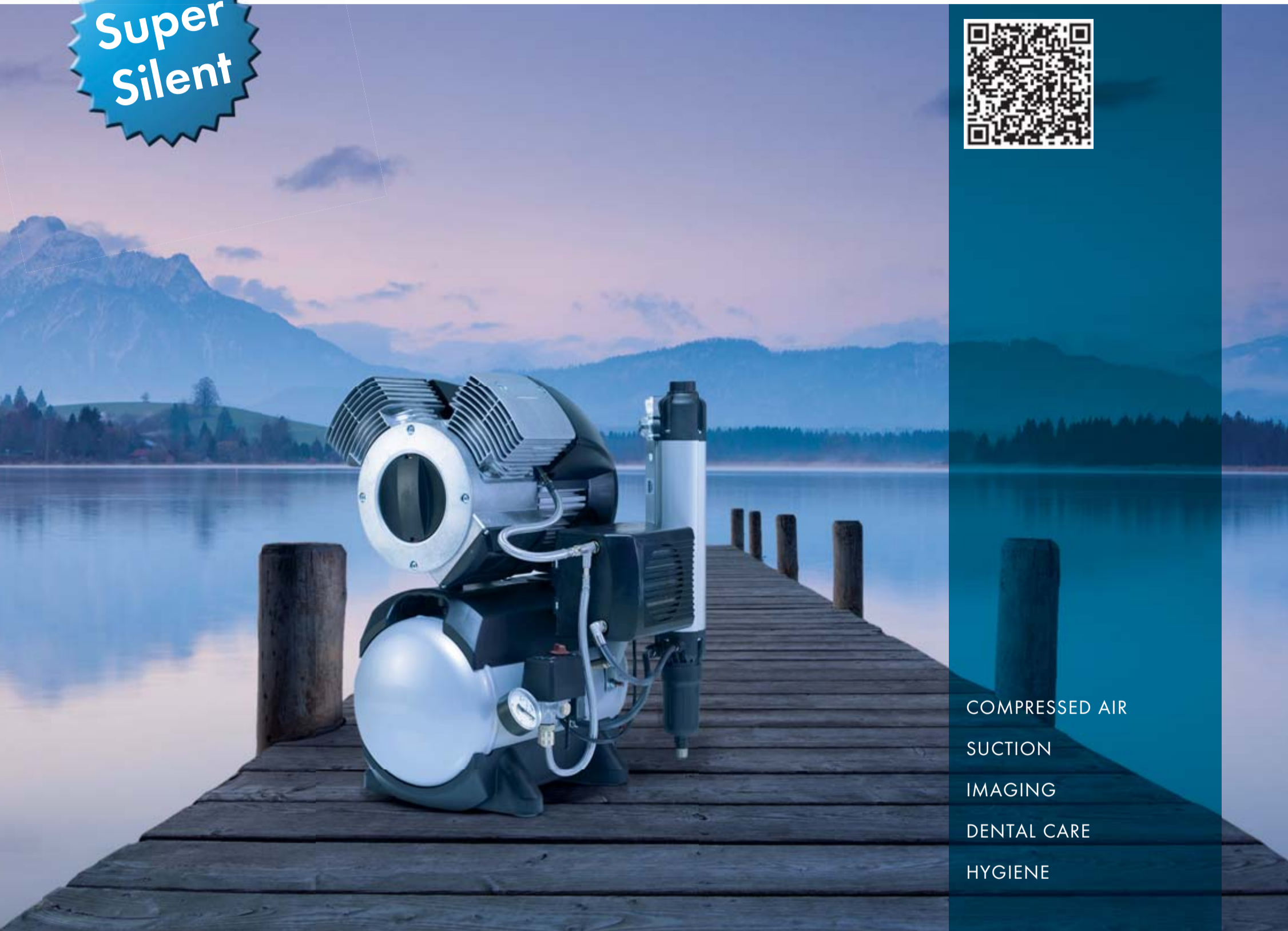


Scientific Work Cited: 1. Data on file; Colgate-Palmolive, December 2011. Publication in progress.

www.colgateprofessional.com

The Power. The Silence. The new Tornado

Super
Silent



COMPRESSED AIR
SUCTION
IMAGING
DENTAL CARE
HYGIENE



Tornado – the new generation of compressors from Dürr Dental

Dürr Dental, the inventor of oil-free dental compressors, presents an unbelievably quiet and powerful compressor for dentistry in the form of the new “Made in Germany” Tornado.

- Oil-free, dry, and hygienic
- One of the quietest of its kind
- Great reliability thanks to closed crankcase
- Antibacterial inner tank coating
- Low-maintenance thanks to membrane-drying unit

Visit us on the FDI Hong Kong 2012, Booth H 20
or our website www.duerrdental.com



reddot design award
winner 2011

 DÜRR
DENTAL