

O  
B  
S  
E  
R  
V  
A  
T  
O  
R  
I  
O



DE LA SALUD ORAL EN ESPAÑA

# Spanish Observatory For Oral Health Results 2015



Observatorio de la  
OSOE

Salud Oral en España

*a focus on professional dental practice,  
patients and dental treatments  
in Spain*



# Coordination



**Prof. Denis Bourgeois**  
International Adviser



**Prof. Juan Carlos Llodra**  
National Coordinator



**Dr. Elias Casals**  
National Adviser



**Prof. Manuel Bravo**  
National Adviser



**Dra. Rocío Barrios**  
National Adviser





The aim is to take the pulse, in a permanent way, to oral health and dental profession in Spain



Sentinel dentists



150  
Sentinel dentists

Online interview  
(CAWI)



Quarterly  
data

Database



Analysis

Web page



Communication

# Method: technical aspects

<b>Type of study</b>	■ Quantitative, selecting a group of 150 “sentinel dentists”
<b>Method</b>	■ Interview online (CAWI) with a semi-structured questionnaire model
<b>Frequency</b>	■ Quarterly.
<b>Universe of analyse</b>	■ Universe: all Spanish dentists in active practice (n= 31.600 in 2015)
<b>Sampling error</b>	■ Sample of 150 dentists scattered across the country, with a sample error of 8%
<b>Level of analyse</b>	■ National.
<b>Patients</b>	■ Each dentist reports data on 20 patients (3000 patients at each wave)
<b>Date of survey</b>	■ The survey has been conducted in 4 waves: March, June, October and December,.

# Method: the calendar and the sample

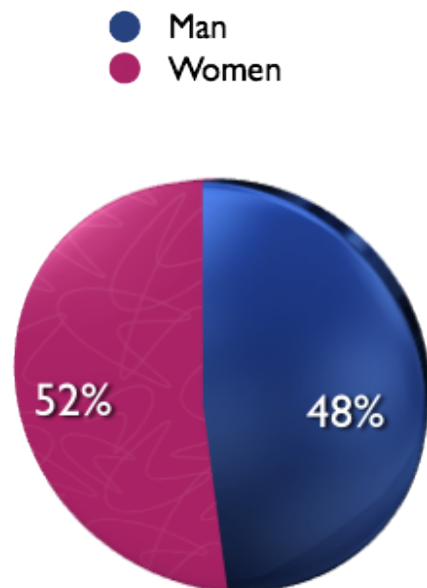


- The Spanish Observatory for Oral Health has been carried out in 4 waves, on the following dates:

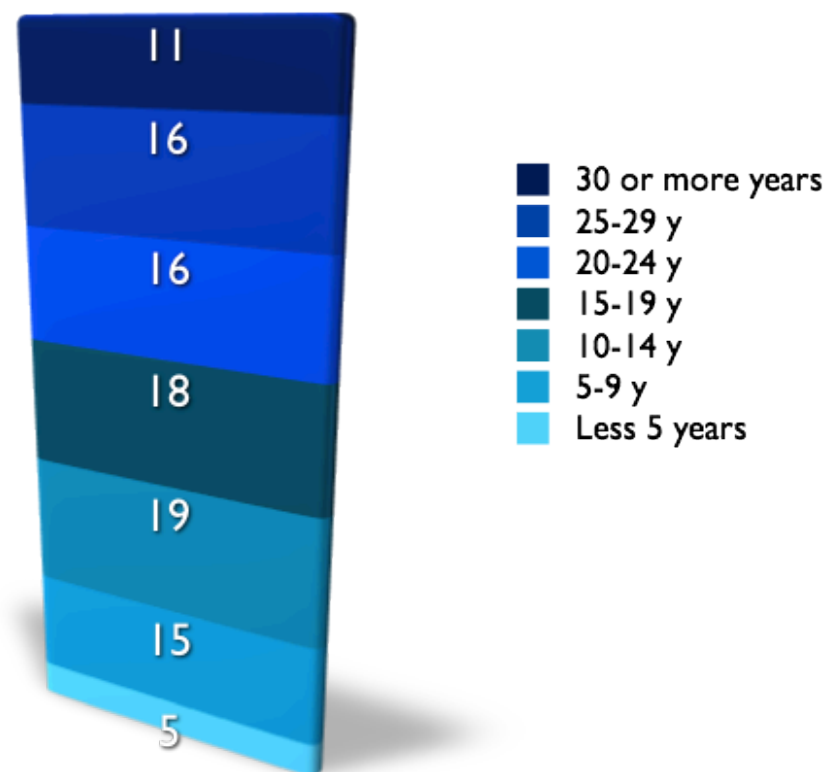
Wave	Data collection
1st	March
2nd	June
3rd	October
4th	December

- 150 sentinel dentists.
- 3000 patients (20 patients/dentist)

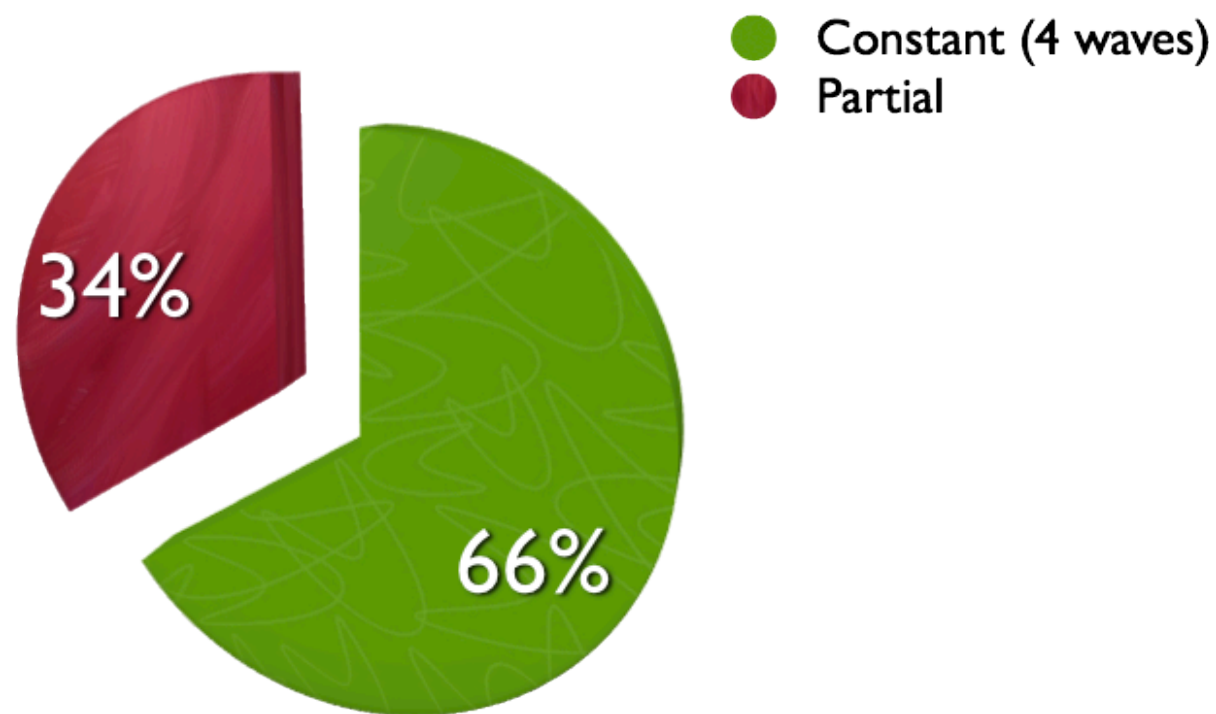
## Gender



## Number of years of professional experience



## Participation data

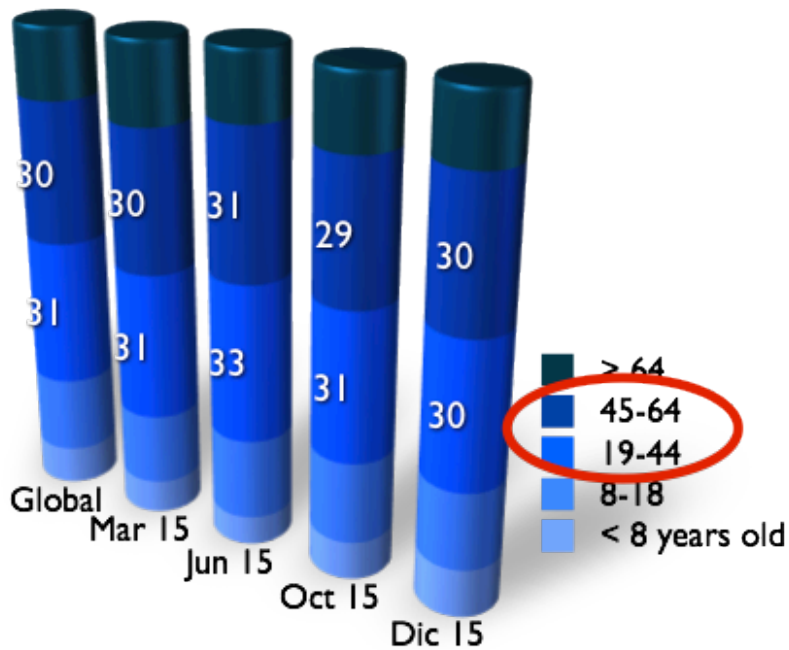




# Results: patients

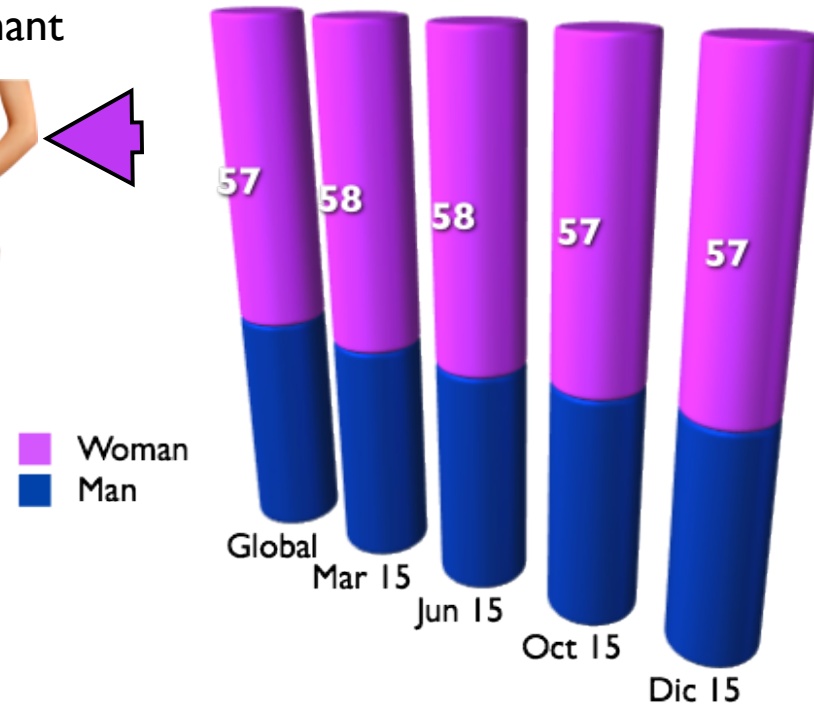
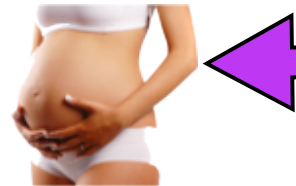


Age of patients



Gender of the patients

3.5% pregnant



**6/10** patients are **women**.

**Children under 7 years and older than 65, are that unless go to the dentist**



120 hours/month

190 patients /month

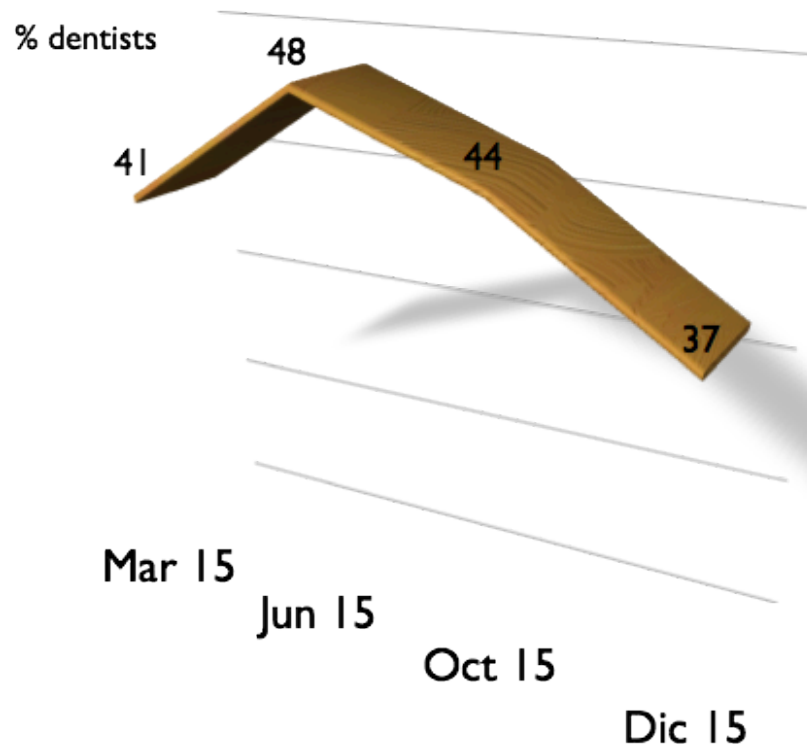
*In 2015, the Spanish dentists worked 120 hours by month attending an average of 190 patients.*

# Results: Professional Practice

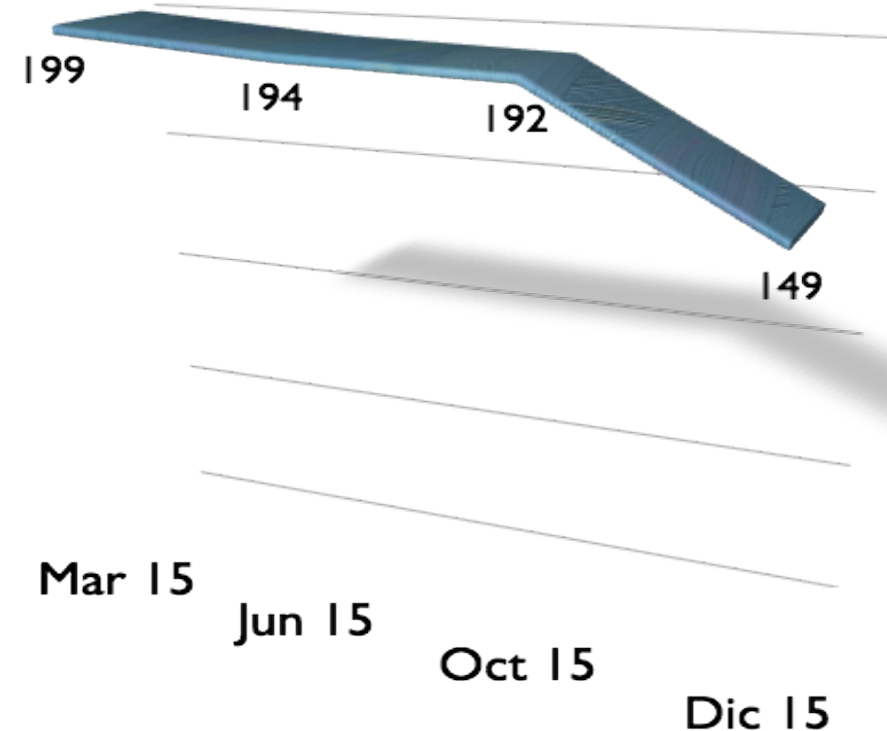


Evolution of working time

— working > 140 h/month

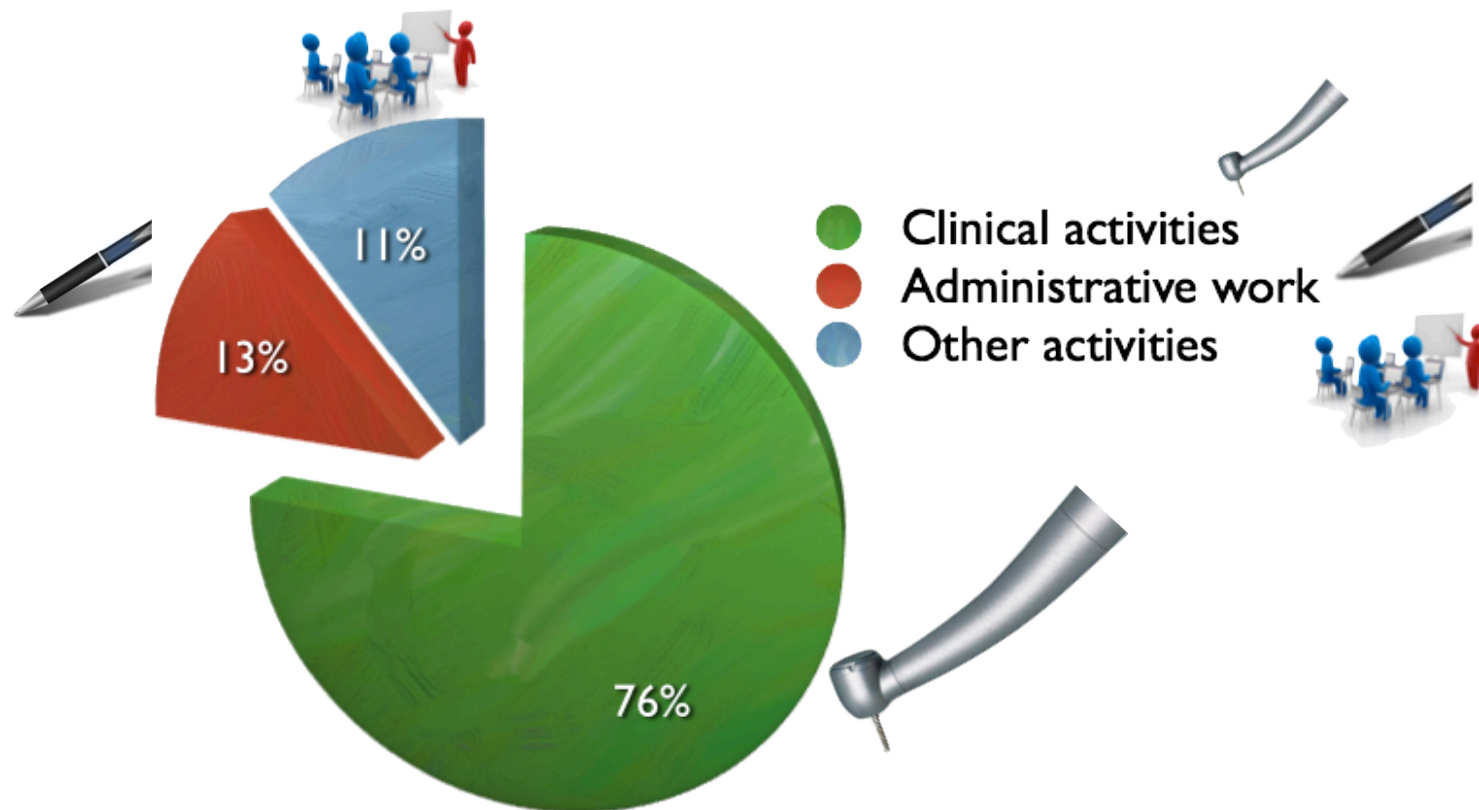


Evolution of number of patients /month



*A decrease in the **number of hours** worked is appreciated as well as **the average number of patients** in the **second half of 2015***

What they dedicate their working time?

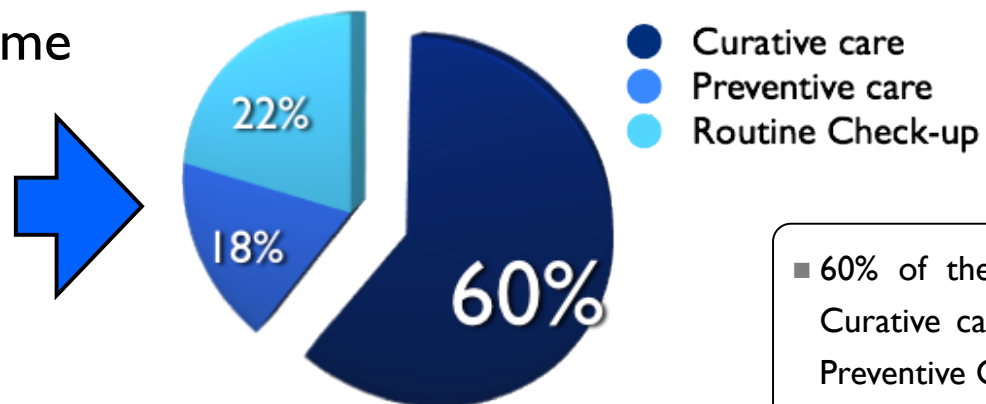


- **The spanish dentists devote 76% of their time to clinical activities, 13% to administrative work and 11% to other activities (mainly formation courses)**

# Results: The treatments

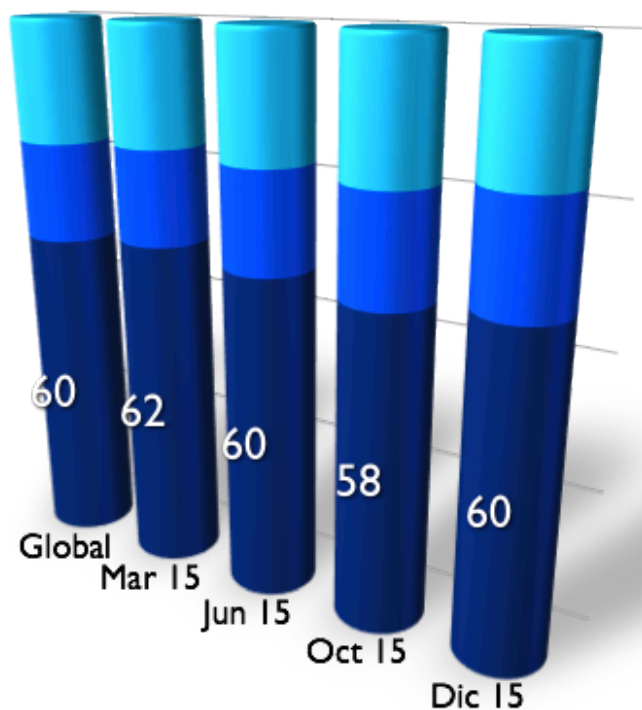


## Clinical time

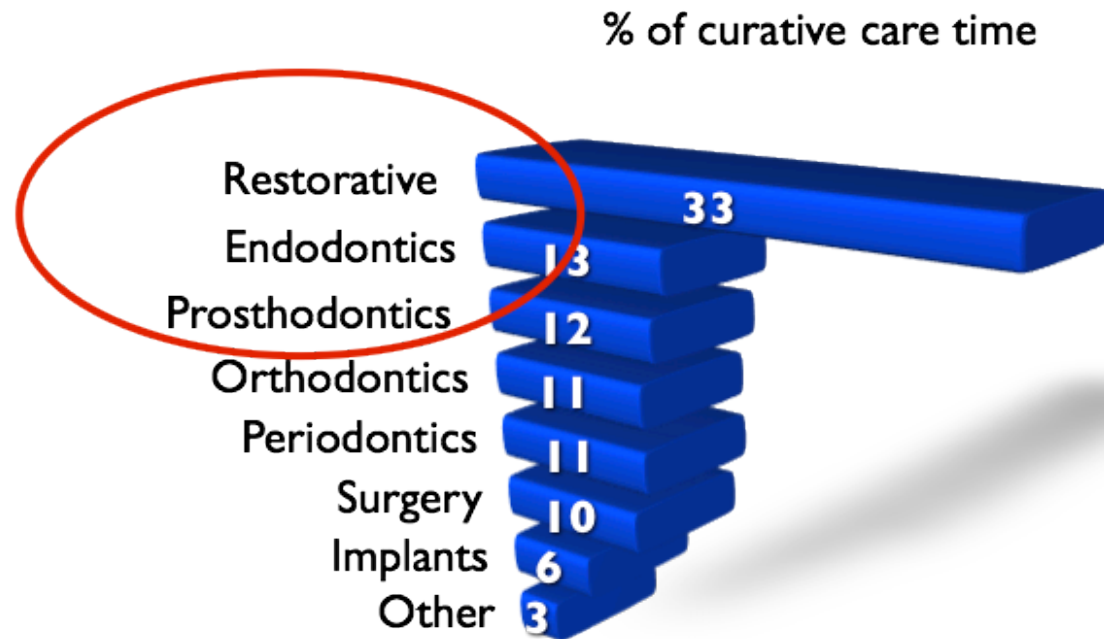
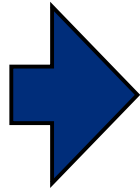


- 60% of the clinical work time is devoted to Curative care while the other 40% is used for Preventive Care or routine check-ups
- **Spanish dentists spend 3.5 times more to treat than to prevent.**

## Evolution of Clinical time



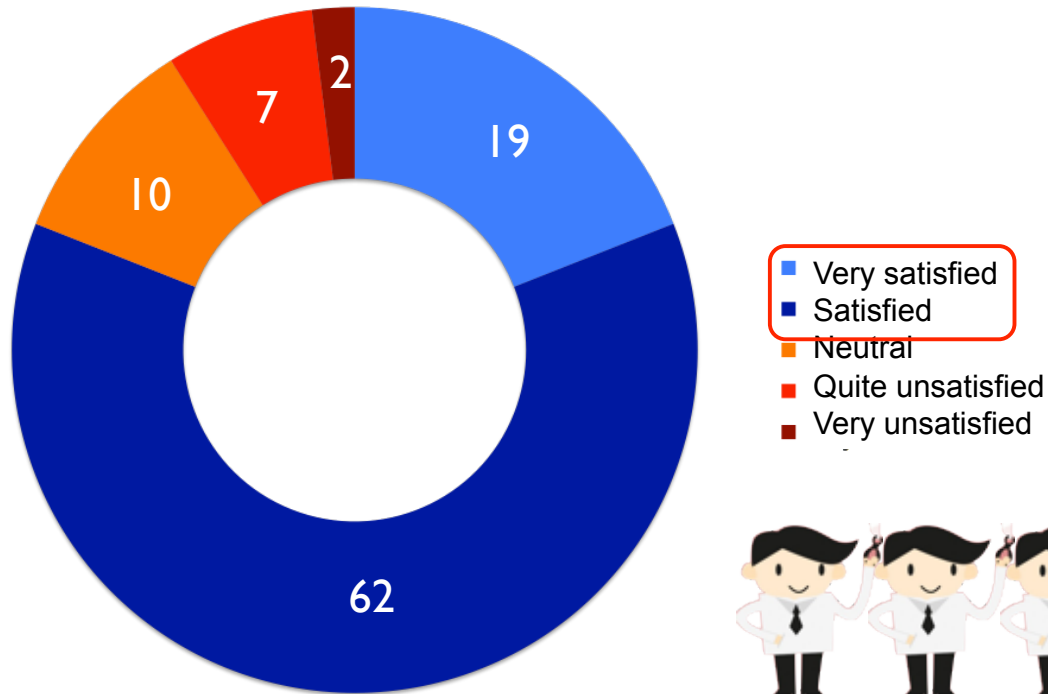
Curative Care



*This pattern remained constant in all waves*

# Results: Professional satisfaction

Overall satisfaction with the care provided to their patients. Scale 1= very unsatisfied, 5= very satisfied

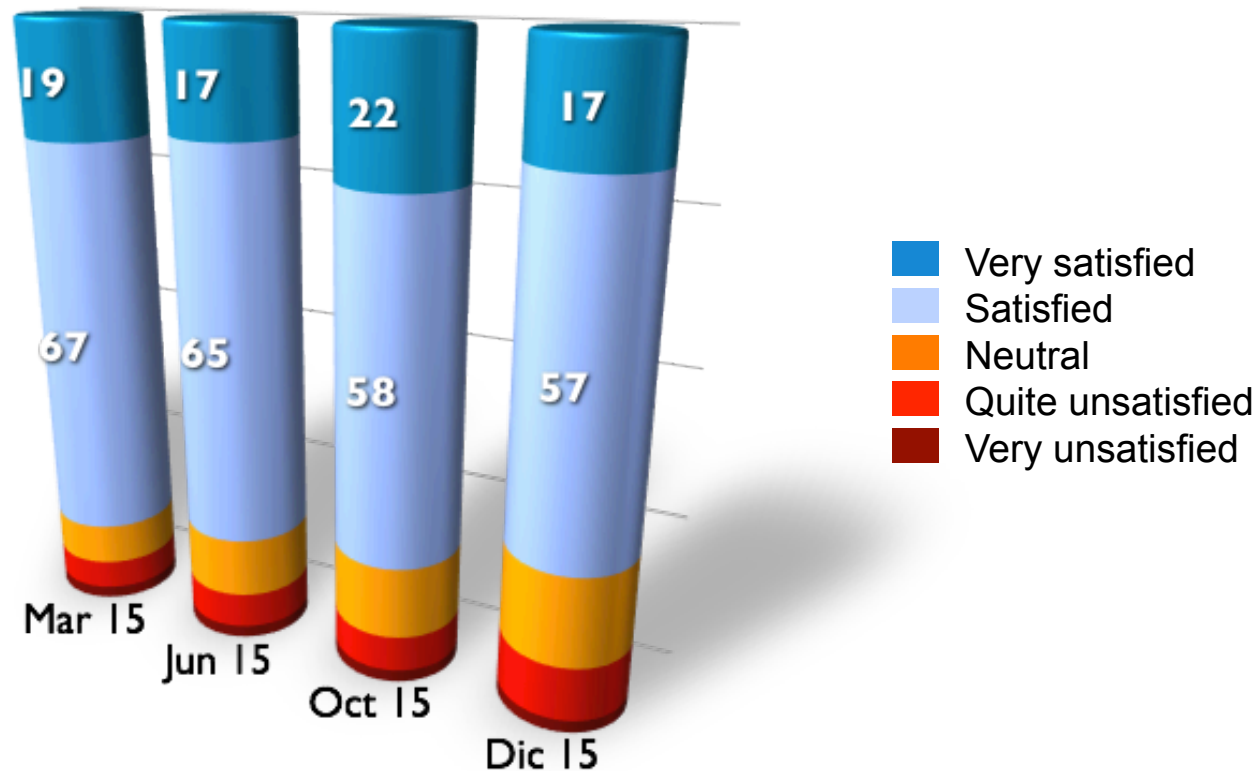


*8/10 dentists are **satisfied** with the care provided to their patients*

# Results: Professional Satisfaction



**Evolution of overall satisfaction** with the care provided to their patients.



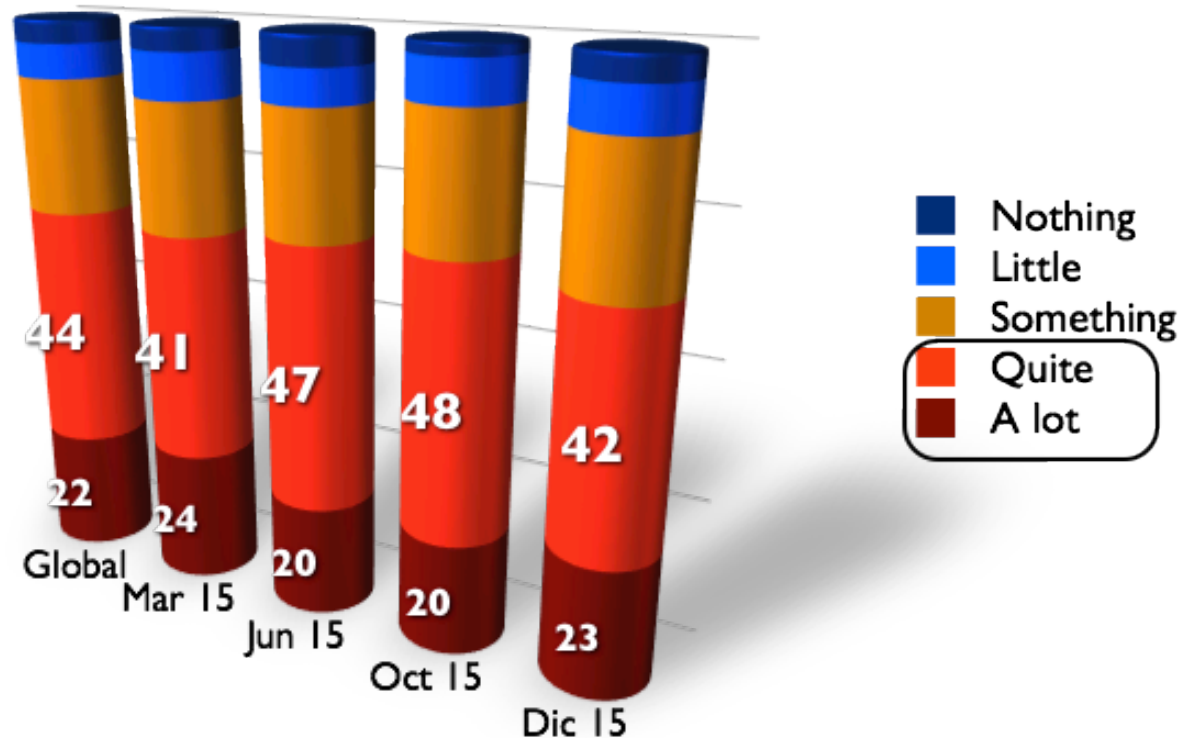
*Overall satisfaction remained constant during the 4 waves*



# Results: The effect of economical crisis in dental care

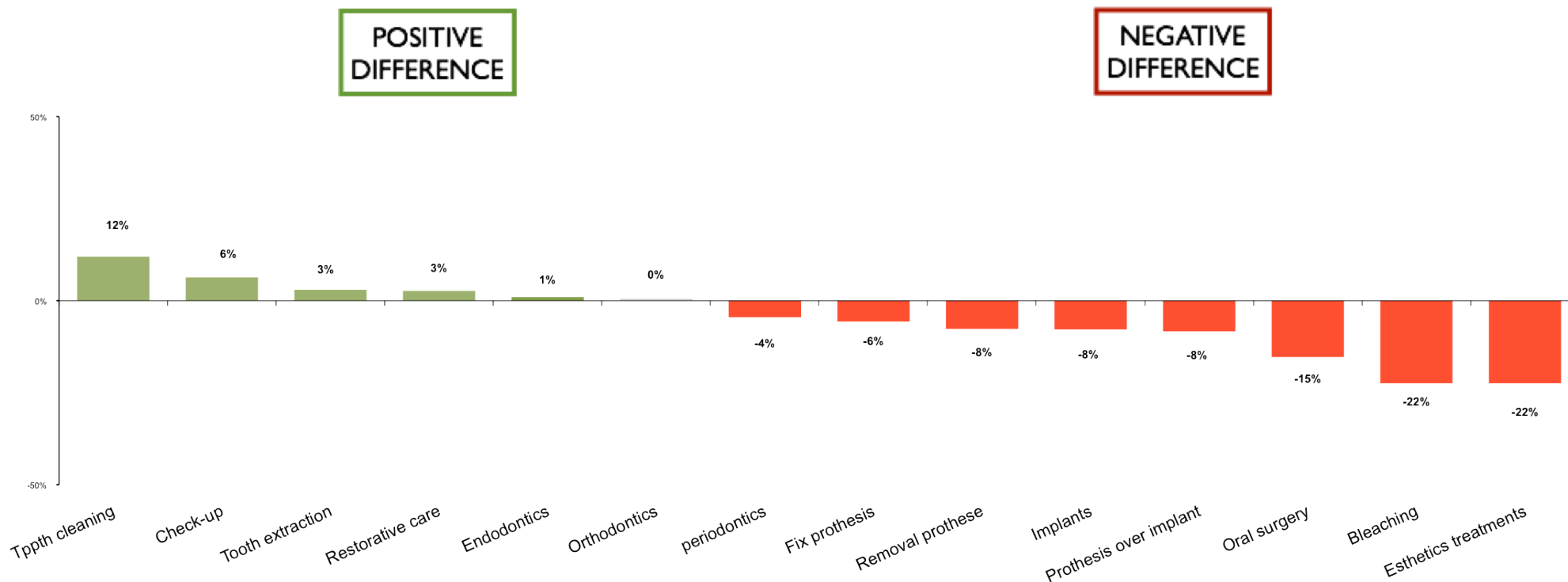


Sometimes the professional is forced to make and / or recommend treatment options that are not ideal because of the cost thereof . Do you consider that the economic crisis may have influenced this?



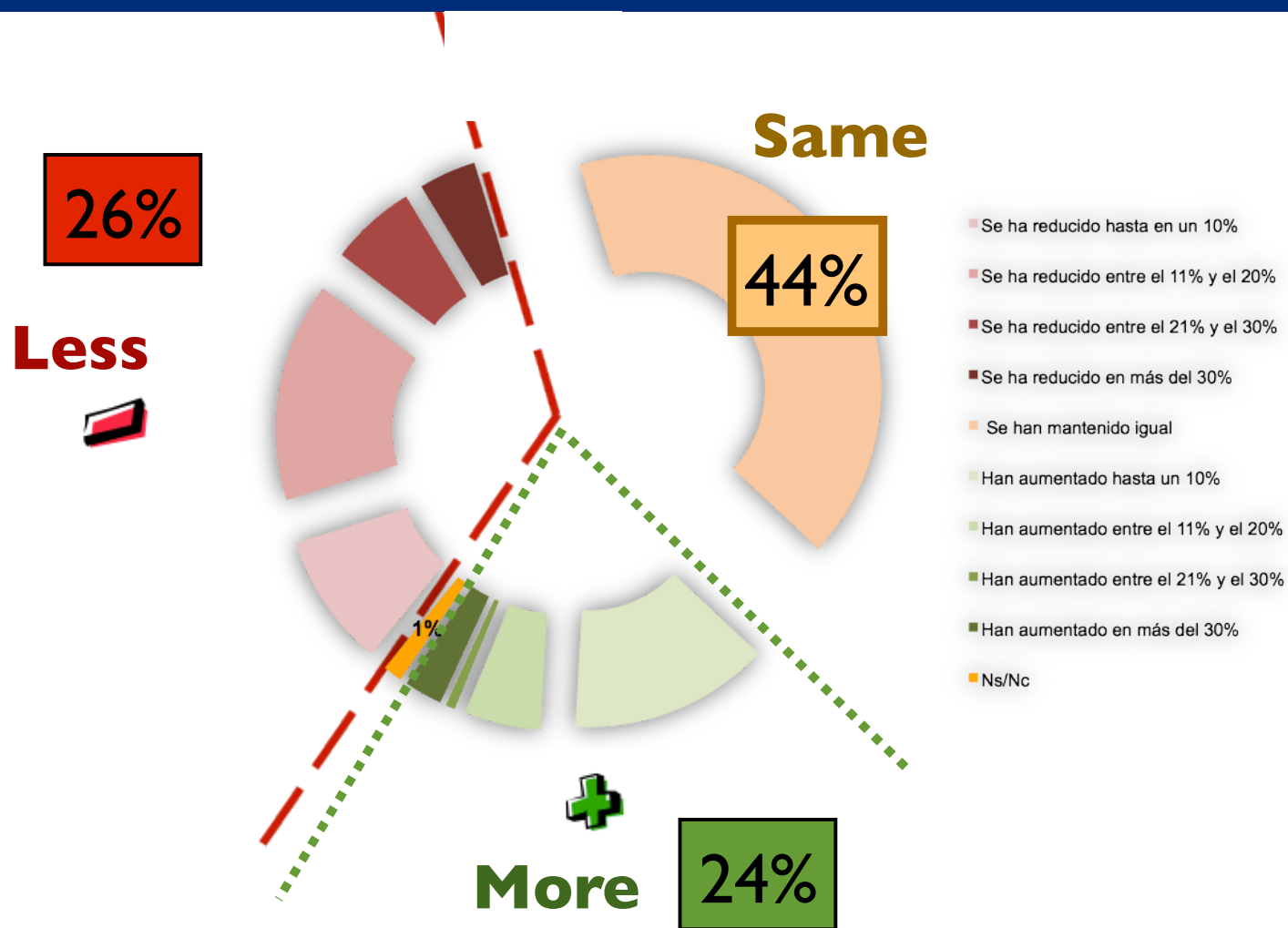
**7/10** dentists believe that the crisis has affected **lot or quite** when to perform certain treatments

# Results: Evolution of the treatments



In 2015 the **simple treatments have increased** .  
**More complex treatments** such as implants and cosmetic  
dentistry have **suffered a decline in demand**  
up to 22%

# Results: Evolution of income



*1/4 dentist has suffered important reduction in revenues in 2015*

## Workload of spanish dentists

- In 2015 the spanish dentists worked 120 hours by month attending an average of 190 patients.
- A decrease in the number of hours worked is appreciated as well as the average number of patients in the second half of 2015

## The patients

- 6/10 patients are women and 3.5% are pregnant
- Children under 7 years and older than 65, are that unless go to the dentist

## Curative care lead the ranking

- The spanish dentists devote **76%** of their time to clinical activities, mainly curative care.
- The most commonly demanded treatments are restorative care, endodontics, prosthodontics and periodontics care.

## Less complexes treatments and less cosmetic dentistry

- The most complex dental treatments such as dental implants or cosmetic dentistry decreased up to **22%** in 2015

## Dentist's satisfaction

- **8/10** dentists are **satisfied** with the care provided to their patients.
- **Most** believe that the **economic crisis** has affected to offer patients ideal treatment options.

## The economic crisis affects dentist revenues

- **1/4** dentist has suffered **important reduction** in revenues in **2015**.

## The main concerns of Spanish dentists

- **Health legislation** regarding advertising, franchising control, plethora professional and oral health promotion are the main concerns of Spanish dentists